

The upgraded 4-inch wide screen provides clearer images with higher visibility.

Compact Programmable Display

# GT11

- 4 inch mono-chrome
- 3 color LED
- 24 chars. x9 lines
- 240x96 dots
- Free switch layout  
(8x8 dots min)
- RS232C/RS422 (RS485)
- Through function
- 24V DC



## Clear × Bright = Easy to use

The 4-inch wide screen consists of a high-definition LCD, which increases the information capacity.

**Number of dots**  
**2.25 times**  
**240×96 dots**  
(Compared with our conventional model) \*1

**GT10**

64 dots  
160 dots

(Enlarged view)

**GT11**

96 dots  
240 dots

(Enlarged view)

- Higher visibility
- Approx. doubled information capacity

Display of a highly visible equipment status achieved by the 3-color LEDs. The equipment appearance will be improved.

The bright and easy-to-read LCD indicates messages, graphics, switches, lamps, PLC data, graphs, clocks\*2, and others in any layout you want. In addition, three backlight colors can be selected according to the equipment status. This allows you to identify the status at a glance.

**70% brighter**  
(than our conventional model) \*1

Normal (Green)

In operation (Orange)

Emergency (Red)

3-color LED Backlight Type

White LED Backlight Type

## Cost and space saving

Mountable in tight places

Costs can be reduced by using this model instead of a mid-size display.

**Approx. 20% thinner** \*1

26 mm\*3  
72 mm  
144 mm

Display in portrait orientation is also available.

Compatible with our conventional GT10 model.

Exchangeable since the panel cut dimensions are identical, and screen data exchange is also possible.\*4

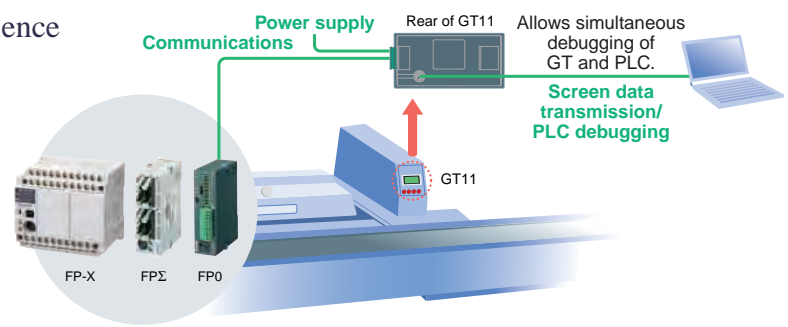
New



## Simple connection and maintenance

The through function improves the convenience in combination with our FP series PLC.

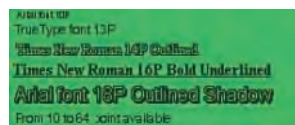
Simultaneous operation of GT data transfer and PLC debugging will be available by connecting your GT to a personal computer and our FP series PLC.



## Great diversity and variety of use

The 4-inch wide screen provides a wide variety of display functions that improve the workability for operators.

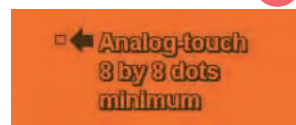
### "TrueType fonts"



With the TrueType fonts, the screen can display up to 216 characters at a time (24 chars. x 9 lines) and therefore be used effectively.

### "Analog-touch design"

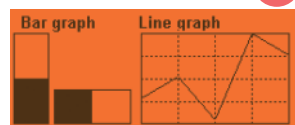
NEW



You can freely position switches as small as 8 x 8 dots.

### "Graph function"

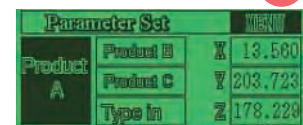
Up-graded



You can identify the production or operation status in line or bar graph form.

### "Recipe function"

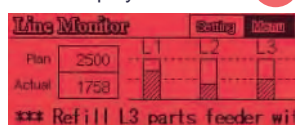
NEW



Settings by product item and other data (up to 3,600 words) can be transferred to PLC, simplifying PLC programming.

### "Flow Display function"

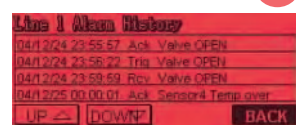
NEW



A flowing message of up to 64 characters (two-byte) can be displayed at the bottom of the screen. (128 messages)

### "Alarm list"

NEW



Alarm activation, check, and recovery can be recorded and displayed.

### "Write Device function"

NEW



This function writes the PLC values or turns bits on/off according to the PLC status or the screen No.

The language switching function facilitates PLC programming and screen switching.

Conventionally, screens were created for each language. With this new language switching function, data can be entered in all available languages for each part. The same screens can be created all at once, and ladder diagram creation is also easier.

画...	部...	日本語	英語	简体字中国語	繁体字中国語	韓国語
000	SW0	日本語	English	简体中国語	繁體中國語	한국어
000	SW0	ありがとうございました	Thank you	热烈欢迎	請多指教	안녕하
000	SW1 1	1	1	1	1	1
000	SW1 2	2	2	2	2	2

Available languages \*5



There are two types of communication (RS232C/RS422).

Connection with PLCs of a variety of manufacturers is possible. (Please refer to the compatible PLC list.)

The 24-V RS422 type can be connected at a maximum distance of 500m.

The use of high-brightness LEDs eliminated backlight replacement work.

\*1: Compared with GT10.  
 \*2: To use the internal clock function, buy a commercially available battery (CR2032).  
 \*3: When the panel thickness is 5 mm, the screw head of the mounting bracket protrudes 2 mm.  
 \*4: The mounting bracket is different. When converting the screen data, the font size will not be automatically converted.  
 \*5: If your operating system is Windows 2000 or XP, the above languages can be displayed on one screen at a time. With other operating systems, the screen creation tool "Terminal GTWIN English Version" is required, and the operating system's language must be the one you want to display.  
 \*6: UL/cUL marking is not available to white LED backlight type.