

Ultra compact size with all the features required for control panels

Compact Programmable Display

GT01

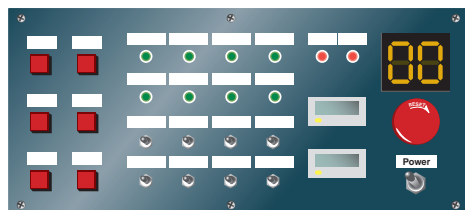
- 3 inch mono-chrome
- 3 color LED
- 12 chars. x6 lines
- 128x64 dots
(8x8 dots min)
- Free switch layout
- RS232C/RS422 (RS485)
- Through function
- 5V DC/24V DC



Cost and space saving

GT01 is a shortcut to cost reduction.

Eliminates the need for component arrangement, component inventory, and man-hours for wiring.



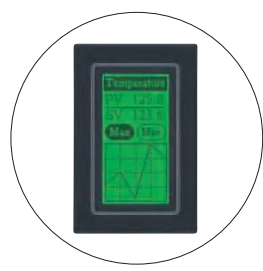
Improves the design and operability.

Easy to change the settings by model and user.

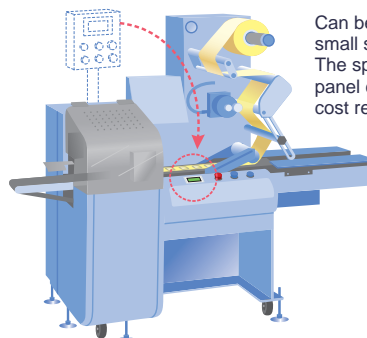
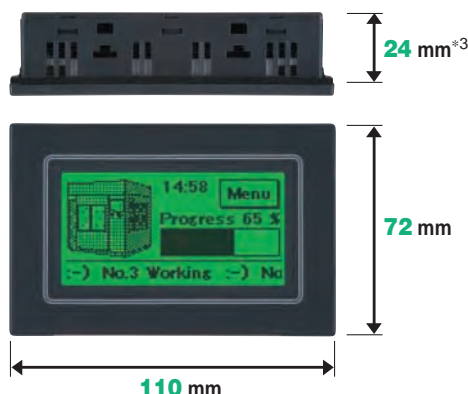
Total cost
1/5^{*2}

Can be mounted in small spaces.

The ultra-thin body with a depth of only 24 mm^{*3} fits in any space.



Display in portrait orientation is also available.



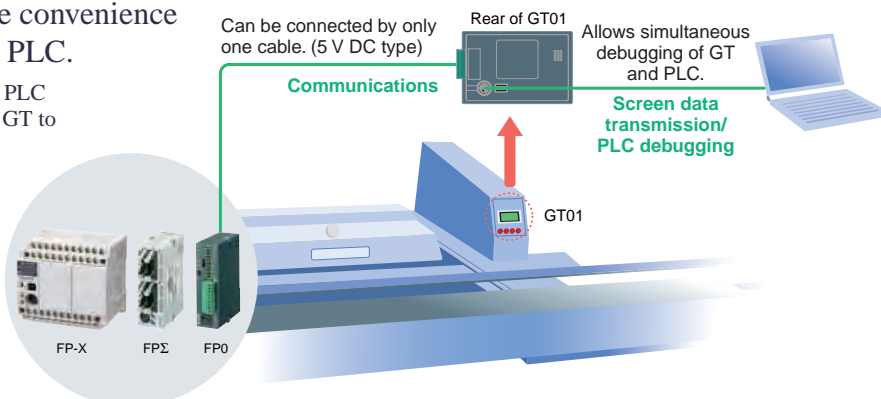
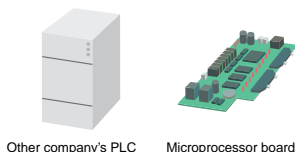
Can be mounted in any small space. The space saving control panel contributes to total cost reduction.

Simple connection and maintenance

The through function improves the convenience in combination with our FP series PLC.

Simultaneous operation of GT data transfer and PLC debugging will be available by connecting your GT to a personal computer and our FP series PLC.

Also supports connection with a PLC of another company or a microprocessor board.



Only one cable is required to connect your GT directly to our **FP series or Mitsubishi Electric **FX series**, substantially reducing the man-hours for wiring. (5 V DC type)**

Only one cable is required because power is supplied through the TOOL port of the PLC.

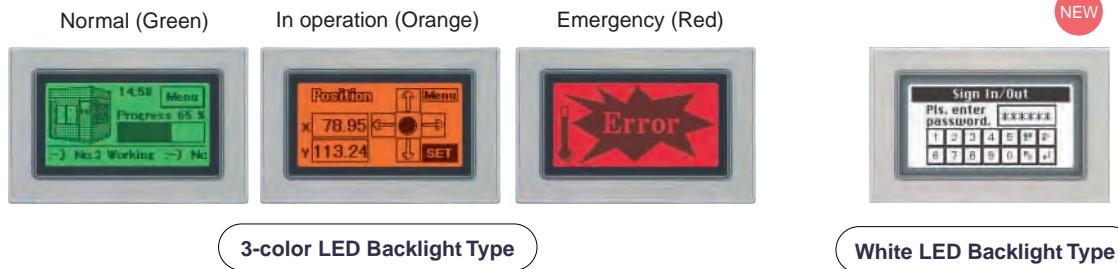


High visibility and multiple functions

- Display of a highly visible equipment status achieved by the 3-color LEDs. The equipment appearance will be improved.

The bright and easy-to-read LCD indicates messages, graphics, switches, lamps, PLC data, graphs, clocks*4, and others in any layout you want. In addition, three backlight colors can be selected according to the equipment status. This allows you to identify the status at a glance.

70% brighter
(than our conventional model)*5



- Displays as small as three inches provide a wide variety of display functions that improve the workability for operators.

“TrueType fonts”



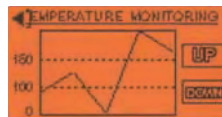
With the TrueType fonts, the screen can display up to 72 characters at a time (12 chars. x 6 lines) and therefore be used effectively.

“Analog-touch design”



You can freely position switches as small as 8 x 8 dots.

“Graph function”



You can identify the production or operation status in line or bar graph form.

“Recipe function”



Settings by product item and other data (up to 3,600) can be transferred to PLC, simplifying PLC programming.

“Flow Display function”



A flowing message of up to 64 characters (two-byte words) can be displayed at the bottom of the screen. (128 messages)

- The “write device function” reduces your workload for creating PLC ladder diagrams. This function writes values in the PLC or turns bits on/off according to the PLC status or the screen No.

Usefulness

- The language switching function facilitates PCL programming and screen switching.

Conventionally, screens were created for each language. With this new language switching function, data can be entered in all available languages for each part. The same screens can be created all at once, and PLC programming is also easier.

画... 部...	日本語	英語	簡体字中国語	繁体字中国語	韓国語
000 SW0	日本語	English	简体中国語	繁體中國語	한국어
000 SW0	ありがとうございました	Thank you	热烈欢迎	請多指教	안녕하
000 SW1 1	1	1	1	1	1
000 SW1 2	2	2	2	2	2

■ Available languages *6



- There are two types of power supplies (5 V DC/24 V DC) and two types of communication (RS232C/RS422). Connection with PLCs of a variety of manufacturers is possible.

The 24-V RS422 type can be connected at a maximum distance of 500m. (Please refer to the compatible PLC list.)

- The use of high-brightness LEDs eliminated backlight replacement work.

*1: CE marking is not available to AIGT0032B1(H1), AIGT0132B1(H1).

*2: Compared with our products. Not guaranteed in all cases.

*3: When the panel thickness is 5 mm, the screw head of the mounting bracket protrudes 4 mm.

*4: Refers to and displays external clock data. (Not provided with a built-in clock function.)

● The panel face protection sheet for GT01 is available as an option.

*5: Compared with GT10.

*6: If your operating system is Windows® 2000 or XP, the above languages can be displayed on one screen at a time.

With other operating systems, the screen creation tool “Terminal GTWIN English Version” is required, and the operating system’s language must be the one you want to display.

*7: UL/cUL marking is not available to white LED backlight type.