

# Class T Fuse Holders - 600 Volt

## Specifications:

- Have Been Tested & Approved for 200,000 Amp Withstand Rating
- Patented Cool-Clip® Design
- UL Listed File No. IZLT.E35113
- CSA Certified File No. LR21455
- CE

## 30 & 60 Amp:

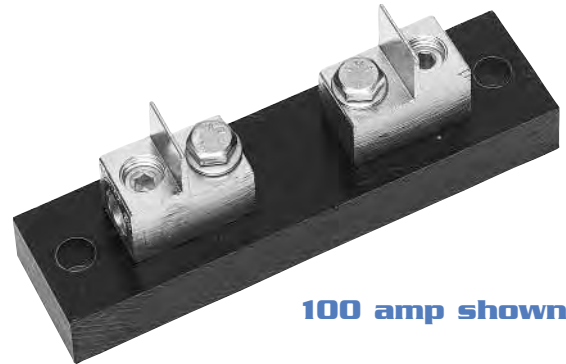
- Clip, Copper Alloy, Tin Plated

## 100 Amp:

- Connector, One Piece Aluminum with Integral Heat Sink, Tin Plated Bolt
- 1/4"-20 X 1/2" Bolt
- 1/4" Belleville Washer

## 200 Amp:

- Connector, One Piece Aluminum with Integral Heat Sink, Tin Plated Bolt
- 5/16"-18 X 3/4" Hex Head
- 5/16" Belleville Washer



100 amp shown

## 400 & 600 Amp:

- Connector, One Piece Aluminum with Integral Heat Sink, Tin Plated Bolt
- 3/8"-16 X 3/4" Hex Head
- 3/8" Belleville Washer

## Catalog#:

Std.	Reinforced	Poles	Amp	Base Materials	Wire Range	Fuse Size	Fuses
6T30A2S	R6T30A2S	2	30	Phenolic	#10-#22 AWG CU	9/16" DIA BY 1 1/2"	A6T JJS JLLS
6T30A3S	R6T30A3S	3			#10-#14 AWG CU		
6T30A2SP	R6T30A2SP	2			#2-#14 AWG CU #2-#12 AWG AL		
6T30A3SP	R6T30A3SP	3					
6T30A2B	R6T30A2B	2			13/16" DIA BY 1 9/16"		
6T30A3B	R6T30A3B	3					
R6T60A2B	SAME	2	60		#2/0-#14 AWG CU #2/0-#12 AWG AL	13/16" DIA BY 2 61/64"	
R6T60A3B		3					
6T100A1B	N/A	1	100		250 kcmil - #6 AWG CU AL	1 1/16" DIA BY 3 1/4"	
6T100A3B		3					
6T200A1B		1	200			1 39/64" DIA BY 3 5/8"	
6T200A3B		3					
6T400A1B		1	400	(2) 500 kcmil - #6 AWG CU AL		2 5/64" DIA BY 3 63/64"	
6T600A1B			600				

See pages 20-22 for dimensional information

# Class T Fuse Holder Dimensions

		Figure	A	B	C	D	E	F	G	H	I	J
T30A	2 POLE	FIG 1	1.12	SEE FIGURE #1								
RT30A	3 POLE											
T60A	2 POLE	FIG 1	1.28	SEE FIGURE #1								
RT60A	3 POLE											
T100A	1 POLE	FIG 2	5.25	1.37	1.87	4.50	0.38	0.69	N/A	0.20 THRU 0.37 X .44 C'BORE	3/16 HEX	0.19
	3 POLE			4.12								
T200A	1 POLE	FIG 2	7.00	1.50	2.25	6.25	0.38	0.75	N/A	0.28 THRU 0.50 X .44 C'BORE	5/16 HEX	0.19
	3 POLE			4.50								
T400A	1 POLE	FIG 3	8.12	2.25	2.37	7.37	0.38	1.12	N/A	0.28 THRU 0.50 X .44 C'BORE	N/A	0.19
T600A	1 POLE	FIG 4	8.75	2.75	2.62	8.06	0.34	0.38	2.00	0.28 THRU 0.50 X .44 C'BORE	N/A	0.19
6T30A	2 POLE	FIG 5	1.28	SEE FIGURE #5								
R6T30A	3 POLE											
R6T60A	2 POLE	FIG 5	1.74	SEE FIGURE #5								
	3 POLE											
6T100A	1 POLE	FIG 2	6.06	1.37	1.87	5.31	0.38	0.69	N/A	0.20 THRU 0.37 X .44 C'BORE	3/16 HEX	0.19
	3 POLE			4.12								
6T200A	1 POLE	FIG 2	7.75	1.50	2.25	7.00	0.38	0.75	N/A	0.28 THRU 0.50 X .44 C'BORE	5/16 HEX	0.19
	3 POLE			4.50								
6T400A	1 POLE	FIG 3	9.00	2.25	2.37	8.25	0.38	1.12	N/A	0.28 THRU 0.50 X .44 C'BORE	N/A	0.19
6T600A	1 POLE	FIG 4	9.75	2.75	2.62	9.00	0.38	0.38	2.00	0.28 THRU 0.50 X .44 C'BORE	N/A	0.19

MM = Dim X 25.4

# Class T Fuse Holder Dimensions

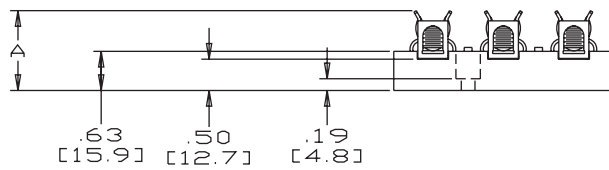
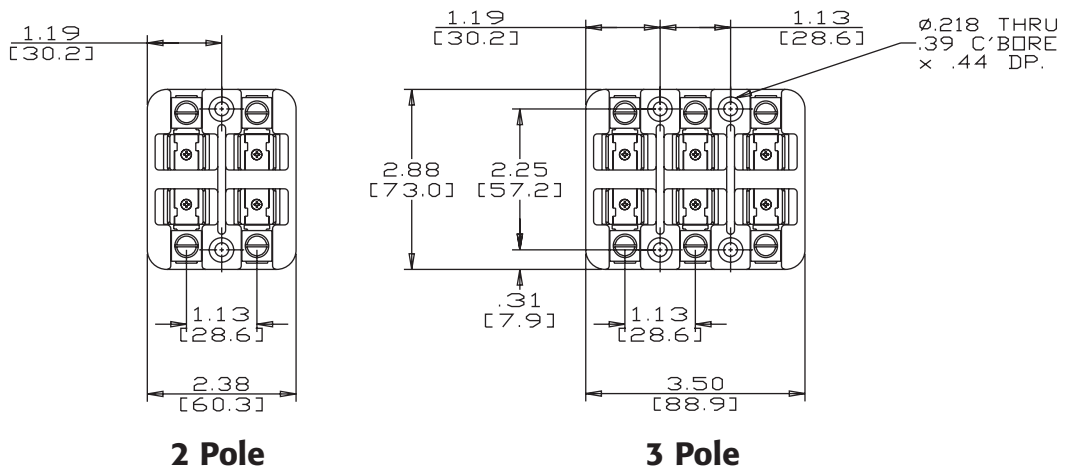


Figure 1:

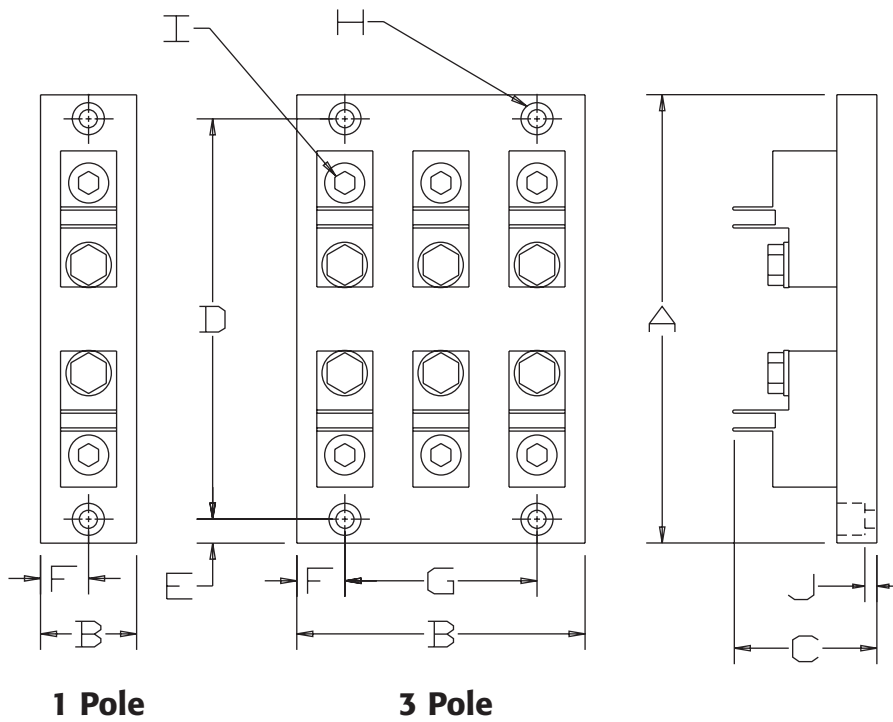


Figure 2:

# Class T Fuse Holder Dimensions

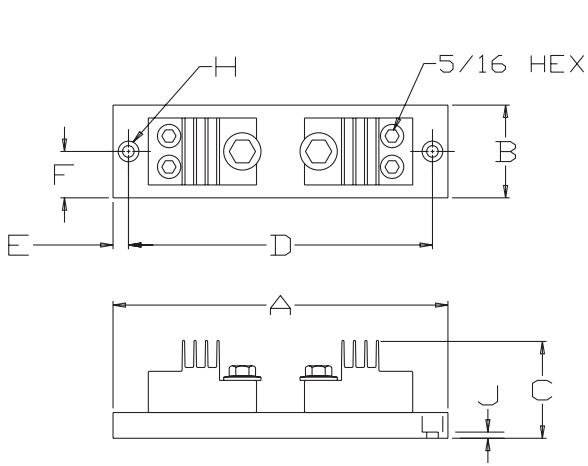


Figure 3:

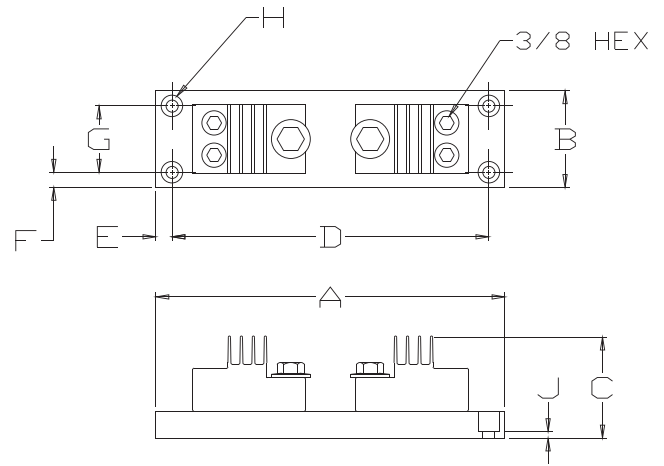
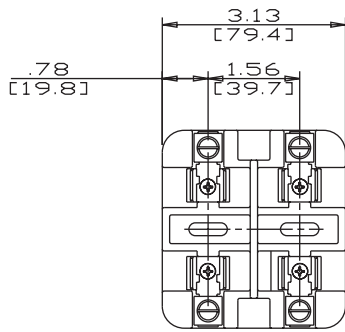
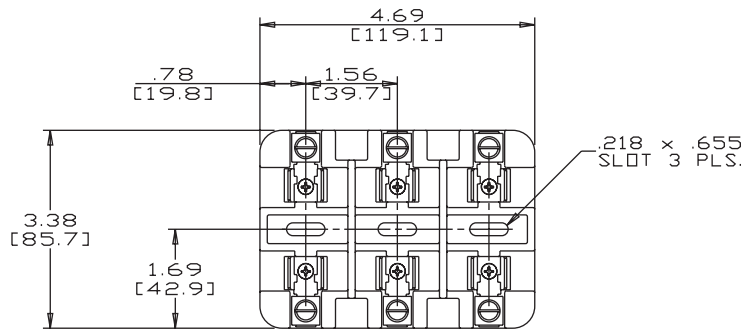


Figure 4:



2 Pole



3 Pole

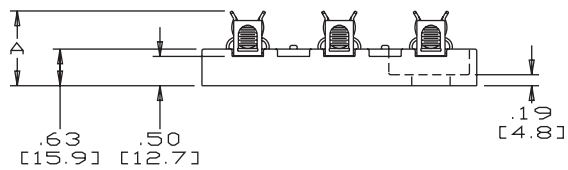


Figure 5: