

Studded Power Feed Thru Terminal Blocks

ST722E Series (end mount)

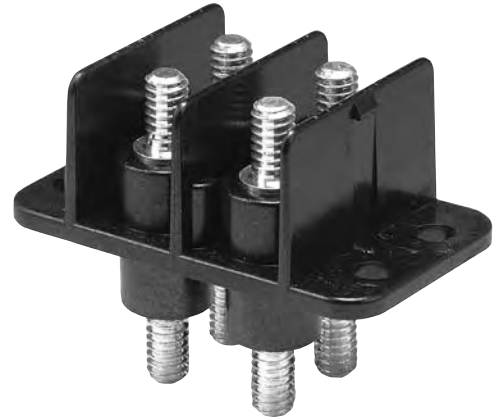
Specifications:

Electrical:

- 300 Volts AC/DC (UL 1059 Class B and C)
- 175 Amps
- Wire Range 2/0 - #8
- Accommodates Two Hole Compression Lugs on .625" Centers – wires #2 and larger may require narrow lugs

General/Mechanical:

- Base, Thermoplastic, 125°C (UL RTI)
- Studs, Brass, Nickel Plated
- 1 - 6 Poles
- .73" Centers
- Application Torque: 35 lbf-in for #10 - 32 and M5.
50 lbf-in for 1/4" - 20 and M6
- UL Recognized File No. XCFR2.E62806
- CSA Certified File No. LR19766
- CE
- RoHS Compliant



ST722E2503

LENGTH	"P1"	"P2"
1-LINE	1.32	.66
2-LINE	2.05	1.39
3-LINE	2.78	2.12
4-LINE	3.51	2.85
5-LINE	4.24	3.58
6-LINE	4.97	4.31

Catalog Number	Number of Poles	Dimensions A		Dimensions B	
		Inches	Metric	Inches	Metric
ST722EXX01	1	1.77	(44.96)	1.32	(33.53)
ST722EXX02	2	2.50	(63.50)	2.05	(52.07)
ST722EXX03	3	3.23	(82.40)	2.78	(70.61)
ST722EXX04	4	3.96	(100.58)	3.51	(89.15)
ST722EXX05	5	4.69	(119.13)	4.24	(107.70)
ST722EXX06	6	5.42	(137.67)	4.97	(126.24)

Replace XX with thread size: 19 - #10-32 Stud
25 - 1/4" - 20 Stud
M5 - M5 Stud
M6 - M6 Stud

See page 57 for available covers

