

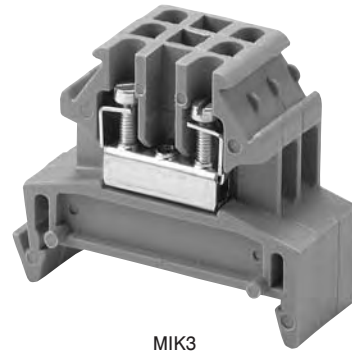
# DIN Rail Terminal Blocks

## MIK3

### 5 mm - 600 Volts AC/DC

#### Specifications:

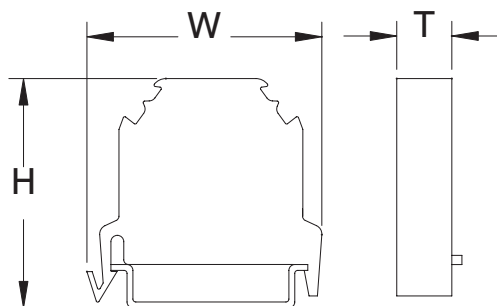
- Insulating Material, Nylon- 6/6, Gray
- Wire Range #12-#22 AWG – 20 Amps
- UL Recognized File No. XCFR2.E62806
- CSA Certified File No. LR700930- 25 Amps
- VDE – 26 Amps
- **CE**
- RoHS Compliant



MIK3

Catalog #	Description
MIK3	Center Section
MN35-2	DIN Rail symmetrical 35 X 7.5 mm slotted 2 m long, steel zinc-plated
MVB2-2	Jumper 2-position
MVB2-12	Jumper 12-position
MVL2-2	Connecting straps for linking together two adjacent 12-pole jumpers
MIW2	Insulating end sections for covering and insulating the last terminal in an assembly
MIW4	Insulating partition walls for visual/electrical separation of terminal groups
MKAW2	Safety cover with warning label for line terminals which cannot be disconnected
MSK35	End bracket used on both ends of the assembly to hold blocks in place

Wire strip length 1/4"



#### Dimensions:

- H = 36 mm (1.417")
- W = 42 mm (1.653")
- T = 5 mm (.197")