

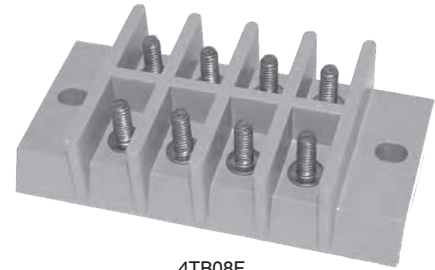
Kulka® Navy Class

(A-A-59125) / (MIL-T-55164*)

Notes:

Molded material is MAI-60 in accordance with MIL-M-14 (*Molded material is GDI30F).

The stud connector for these terminal boards is considered part of the stud and is required, unless otherwise specified. With the stud connector removed, the terminal board will provide twice the number of connection points and allow for an additional wire per terminal.



4TB08F

Nuts and connectors are provided when appropriate. They are unplated brass and shipped unassembled.

| A-A-59125/ MIL-T-55164 Information | | Terminal Type Description | Voltage | | Current Max Rated | Wire & Lug Information | | | | |
|--|--------|------------------------------|---------------|----------------------|----------------------|------------------------|---------------------|---------------|------------------|--------------------------|
| Class | Spec # | | Max Rated | Dielectric with Test | | Screw Size | RECMD Max Wire Size | MS17143 Lug # | Max Lug Width | RECMD Torque Lb-In (N-M) |
| 3 TB | / 9 | Single Stud Single Row | 600 V RMS | 2000 V RMS | 45 Amp 60 Hz | #8 | #10 AWG | -3 | 0.395" [10.0] | 16-18 [1.8-2.0] |
| 4 TB | / 10 | Single Stud Double Row | 600 V RMS | 2200 V RMS | 40 Amp 60 Hz | #8 | #12 AWG | -3 | 0.395" [10.0] | 16-18 [1.8-2.0] |
| 5 TB | / 11 | Feed Thru Stud Single Row | 600 V RMS | 2200 V RMS | 50 Amp 60 Hz | #8 | #10 AWG | -3 | 0.395" [10.0] | 16-18 [1.8-2.0] |
| 6 TB | / 12 | Single Stud Double Row | 600 V RMS | 2200 V RMS | 30 Amp 60 Hz | #6 | #14 AWG | -5 | 0.307" [7.8] | 10-12 [1.1-1.4] |
| 7 TB | / 13 | Feed Thru Stud Single Row | 600 V RMS | 2200 V RMS | 40 Amp 60 Hz | #6 | #12 AWG | -6 | 0.307" [7.8] | 10-12 [1.1-1.4] |
| 8 TB 8 TBHT* | / 14 | Double Stud Double Row | 300 V RMS | 1500 V RMS | 30 Amp 60 Hz | #5 | #14 AWG | -11 | 0.282" [7.2] | 8-10 [0.9-1.1] |
| 9 TB | / 15 | Single Stud Single Row | 300 V RMS | 1500 V RMS | 35 Amp 60 Hz | #6 | #12 AWG | — | 0.307" [7.8] | 10-12 [1.1-1.4] |
| 10 TB | / 16 | Single Stud Double Row | 600 V RMS | 2200 V RMS | 30 Amp 60 Hz | #6 | #14 AWG | — | 0.242" [6.11] | 10-12 [1.1-1.4] |
| 11 TB | / 17 | Feed Thru Stud Single Row | 600 V RMS | 2200 V RMS | 40 Amp 60 Hz | #6 | #12 AWG | -15 | 0.242" [6.1] | 10-12 [1.1-1.4] |
| 15 TB | / 19 | Single Stud Double Row | 600 V RMS | 2200 V RMS | 30 Amp 60 Hz | #8 | #14 AWG | -8 | 0.307" [7.8] | 16-18 [1.8-2.0] |
| 16 TB | / 20 | Single Stud Double Row | 1000 V RMS | 3000 V RMS | 40 Amp 60 Hz | #8 | #12 AWG | -3 | 0.395" [10.0] | 16-18 [1.8-2.0] |
| 17 TB | / 21 | Double Stud Double Row | 600 V RMS | 2200 V RMS | 40 Amp 60 Hz | #6 | #12 AWG | -3 | 0.395" [10.0] | 10-12 [1.1-1.4] |
| 18 TB | / 22 | Single Stud Single Row | 600 V RMS | 2200 V RMS | 45 Amp 60 Hz | #8 | #10 AWG | -3 | 0.395" [10.0] | 16-18 [1.8-2.0] |
| 25 TB 25 TBHT* | / 23 | Single Stud Single Row | 300 V RMS | 1500 V RMS | 25 Amp 60 Hz | #4 | #14 AWG | -17 | 0.242" [6.1] | 6-8 [0.7-0.9] |
| 26 TB 26 TBHT* | / 24 | Double Stud Double Row | 300 V RMS | 1500 V RMS | 20 Amp 60 Hz | #4 | #16 AWG | -20 | 0.242" [6.1] | 6-8 [0.7-0.9] |

*Marathon Special Products manufactures terminal blocks that are constructed to meet MIL-T-55164C and A-A-59125. Mil standard A-A-59125, dated September 16, 1997, supercedes MIL-T-55164C. We will continue to supply the same parts for this spec. The CID identifier will be the same class number as for MIL-T-55164C.

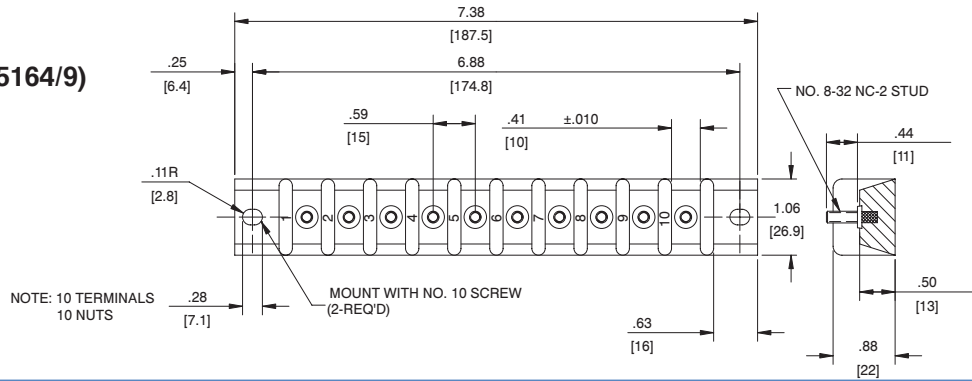
The old MIL-T-55164C standard required Group A and Group B testing. The Group B testing was required every three years. Since the new A-A-59125 standard does not require Group B testing, we have elected to discontinue this test. We will continue to do Group A testing.

The following blocks are effected by this change:

| Class/Spec # | | | | |
|--------------|----------|-----------|-----------|-----------|
| 3TB / 9 | 6TB / 12 | 9TB / 15 | 15TB / 19 | 18TB / 22 |
| 4TB / 10 | 7TB / 13 | 10TB / 16 | 16TB / 20 | 25TB / 23 |
| 5TB / 11 | 8TB / 14 | 11TB / 17 | 17TB / 21 | 26TB / 24 |

Kulka® Navy Class (A-A-59125) / (MIL-T-55164)

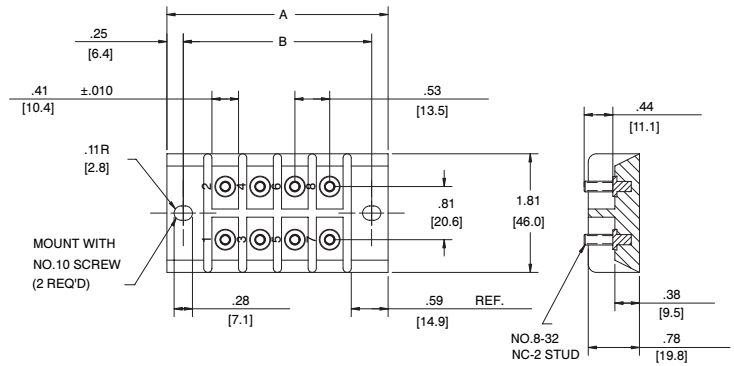
3TB SERIES (A-A-59125/9) / (MIL-T-55164/9)



4TB SERIES (A-A-59125/10) / (MIL-T-55164/10)

| Double Row, Front Connection | | | | |
|------------------------------|-----------|--------|--------|------|
| | # of Term | Dim. A | Dim. B | Nuts |
| 4 TB 08F | 8 | 3.38 | 2.88 | 8 |
| 4 TB 20F | 20 | 6.50 | 6.00 | 20 |

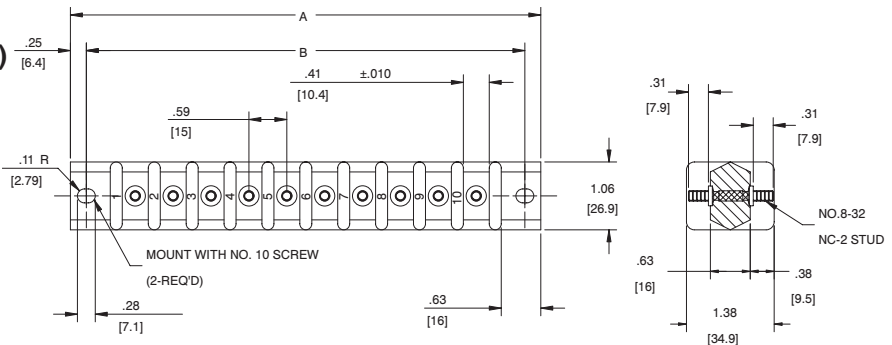
mm = dim X 25.4



5TB SERIES (A-A-59125/11) / (MIL-T-55164/11)

| Single Row, Through Connection | | | | |
|--------------------------------|-----------|--------|--------|------|
| | # of Term | Dim. A | Dim. B | Nuts |
| 5 TB 08F | 8 | 6.13 | 5.63 | 16 |
| 5 TB 10F | 10 | 7.38 | 6.88 | 20 |

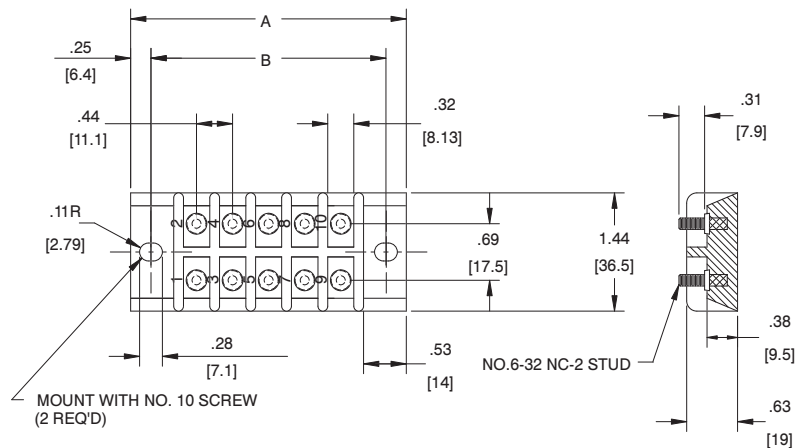
mm = dim X 25.4



6TB SERIES (A-A-59125/12) / (MIL-T-55164/12)

| Double Row, Front Connection | | | | |
|------------------------------|-----------|--------|--------|------|
| | # of Term | Dim. A | Dim. B | Nuts |
| 6 TB 06F | 6 | 2.50 | 2.00 | 6 |
| 6 TB 10F | 10 | 3.38 | 2.88 | 10 |
| 6 TB 24F | 24 | 6.50 | 6.00 | 24 |

mm = dim X 25.4

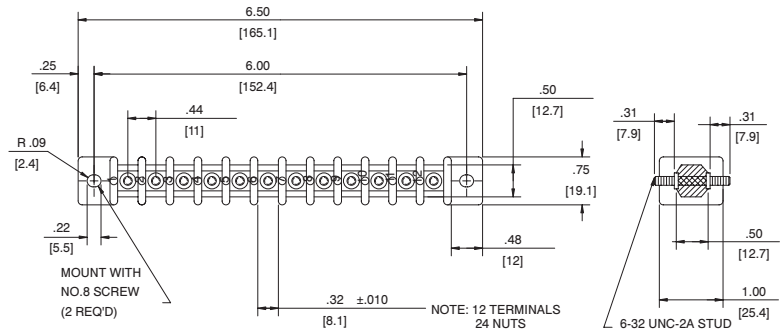


Kulka® Navy Class

(A-A-59125) / (MIL-T-55164)

7TB SERIES

(A-A-59125/13) / (MIL-T-55164/13)



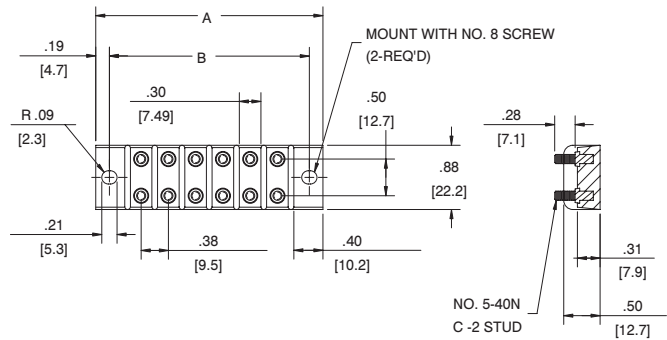
8TB SERIES

(A-A-59125/14) / (MIL-T-55164/14)

Double Row, Linked Front Connection

| | # of Term. | | Dim. A | Dim. B | Nuts |
|----------|-------------------|---------------------|--------|--------|------|
| | w/stud connectors | w/o stud connectors | | | |
| 8 TB 02F | 2 | 4 | 1.63 | 1.25 | 4 |
| 8 TB 06F | 6 | 12 | 3.13 | 2.75 | 12 |
| 8 TB 08F | 8 | 16 | 3.88 | 3.50 | 16 |
| 8 TB 10F | 10 | 20 | 4.63 | 4.25 | 20 |

8TBHT also available mm = dim X 25.4



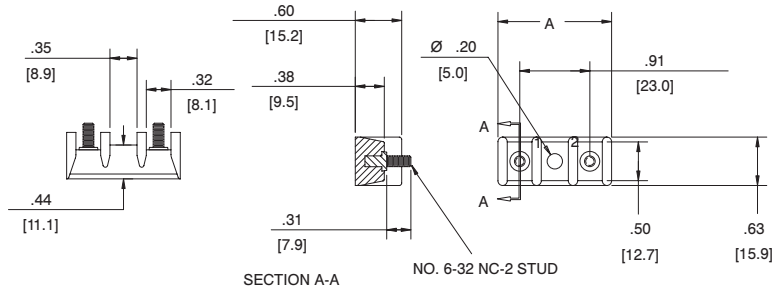
9TB SERIES

(A-A-59125/15) / (MIL-T-55164/15)

Single Row, Front Connection

| Type | # of Term. | Dim. A | Nuts |
|----------|------------|--------|------|
| 9 TB 02F | 2 | 1.48 | 2 |
| 9 TB 04F | 4 | 2.37 | 4 |

mm = dim X 25.4



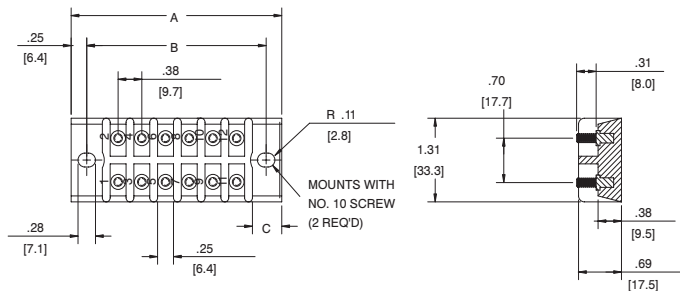
10TB SERIES

(A-A-59125/16) / (MIL-T-55164/16)

Double Row, Front Connection

| Type | # of Term. | Dim. A | Dim. B | Dim. C | Nuts |
|-----------|------------|--------|--------|--------|------|
| 10 TB 18F | 18 | 4.63 | 4.13 | 0.56 | 18 |
| 10 TB 28F | 28 | 6.50 | 6.00 | 0.56 | 28 |

mm = dim X 25.4



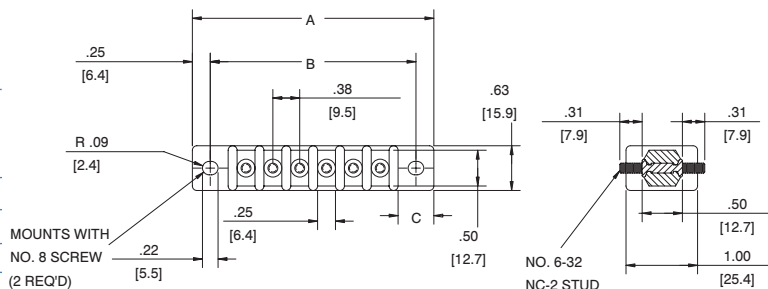
11TB SERIES

(A-A-59125/17) / (MIL-T-55164/17)

Single Row, Through Connection

| Type | # of Term. | Dim. A | Dim. B | Dim. C | Nuts |
|-----------|------------|--------|--------|--------|------|
| 11 TB 04F | 4 | 2.50 | 2.00 | 0.44 | 8 |
| 11 TB 06F | 6 | 3.38 | 2.88 | 0.44 | 12 |
| 11 TB 14F | 14 | 6.50 | 6.00 | 0.56 | 28 |

mm = dim X 25.4



Military/Navy Terminal Blocks

Kulka® Navy Class (A-A-59125) / (MIL-T-55164)

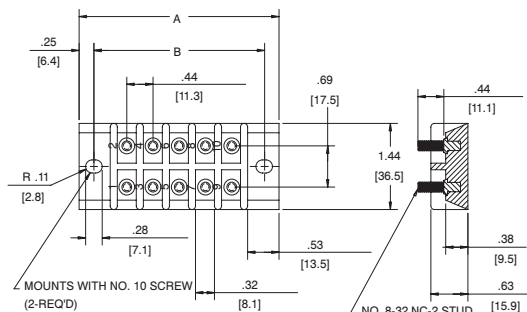
15TB SERIES

(A-A-59125/19) / (MIL-T-55164/19)

Double Row, Front Connection

| Type | Number of Terminals | Dim. A | Dim. B | Nuts |
|-----------|---------------------|--------|--------|------|
| 15 TB 10F | 10 | 3.38 | 2.88 | 10 |
| 15 TB 24F | 24 | 6.50 | 6.00 | 24 |

mm = dim X 25.4



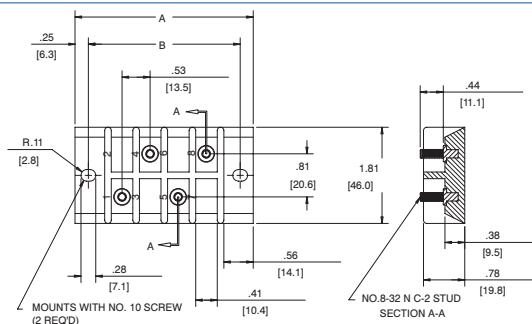
16TB SERIES

(A-A-59125/20) / (MIL-T-55164/20)

Double Row, Front Connection

| Type | Number of Terminals | Dim. A | Dim. B | Nuts |
|-----------|---------------------|--------|--------|------|
| 16 TB 04F | 4 | 3.38 | 2.88 | 4 |
| 16 TB 10F | 10 | 6.50 | 6.00 | 10 |

mm = dim X 25.4



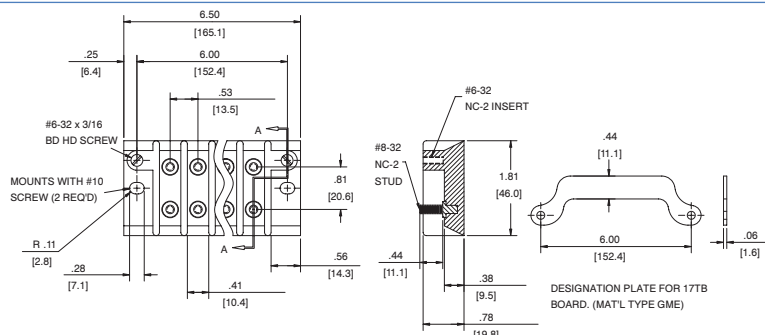
17TB SERIES

(A-A-59125/21) / (MIL-T-55164/21)

Double Row, Front Connection

| Type | Number of Terminals | | Dim. A | Dim. B | Nuts |
|-----------|---------------------|---------------------|--------|--------|------|
| | w/stud connectors | w/o stud connectors | | | |
| 17 TB 10F | 10 | 20 | 6.50 | 6.00 | 10 |

mm = dim X 25.4



25TB SERIES

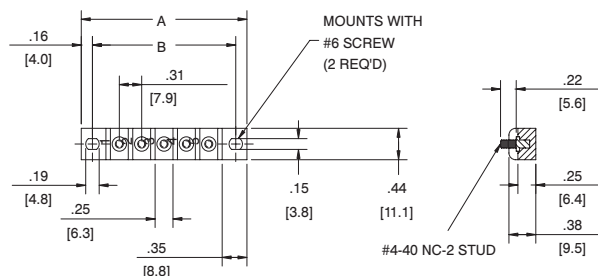
(A-A-59125/23) / (MIL-T-55164/23)

Single Row, Front Connection

| Type | # of Term. | Dim. A | Dim. B | Nuts |
|-----------|------------|--------|--------|------|
| 25 TB 02F | 2 | 1.38 | 1.06 | 2 |
| 25 TB 05F | 5 | 2.31 | 2.00 | 5 |
| 25 TB 06F | 6 | 2.63 | 2.31 | 6 |
| 25 TB 07F | 7 | 2.94 | 2.63 | 7 |
| 25 TB 09F | 9 | 3.56 | 3.25 | 9 |
| 25 TB 10F | 10 | 3.88 | 3.56 | 10 |
| 25 TB 12F | 12 | 4.50 | 4.19 | 12 |

25TBHT also available

mm = dim X 25.4



26TB SERIES

(A-A-59125/24) / (MIL-T-55164/24)

Double Row, Linked Front Connection

| Type | # of Term. | | Dim. A | Dim. B | Nuts |
|-----------|-------------------|---------------------|--------|--------|------|
| | w/stud connectors | w/o stud connectors | | | |
| 26 TB 06F | 6 | 12 | 2.63 | 2.31 | 12 |
| 26 TB 08F | 8 | 16 | 3.25 | 2.94 | 16 |
| 26 TB 10F | 10 | 20 | 3.88 | 3.56 | 20 |
| 26 TB 12F | 12 | 24 | 4.50 | 4.19 | 24 |

26TBHT also available

mm = dim X 25.4

