

Fuse Holder Covers

Specifications:

- Material, Thermoplastic
- Thermal Rating, 125°C (RTI, per UL 746)
- Flammability, VO (per UL 94)
- UL Listed Accessories under File No. JDVS2.E181825
- In Application, Protection is Consistent with IEC Standard 529, Designation IP20 (Finger Safe)* - except CJ6100-1, CJ6100-2, and CJ6100-3
- Opening Allows View of Self-Indicating Fuses
- Holes for Test Probes and Re-tightening of Wire Terminations
- Covers fit most Fuse Holder Brands
- RoHS Compliant



Fuse Holder shown with Covers Attached

Catalog #	For use w/Fuse Holder #	Fuse Type	Voltage	Amp
CHR230	F30A/R30A	H/R	250	30
CHR260	F60A/R60A	H/R	250	60
CHR2100	RF100A/R100A	H/R	250	100
CHR630	6F30A/6R30A	H/R	600	30
CHR660	6F60A/6R60A	H/R	600	60
CHR6100	R6F100A/6R100A	H/R	600	100
CJ630	6J30A	J	600	30
CJ660	6J60A	J	600	60
CC630	6CC30A, Class G	CC, G	600	30
CC660	R6CC60A	CD	600	60
CCM630**	6M30A/6CCM30A	MISC	600	30
CJ6100-1C	6J100A	J	600	100
CJ6100-2C	6J100A	J	600	100
CJ6100-3C	6J100A	J	600	100

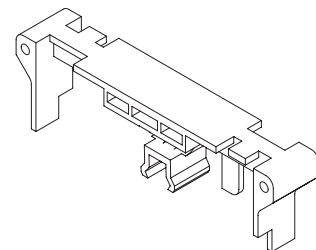
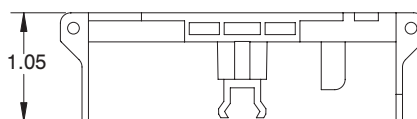
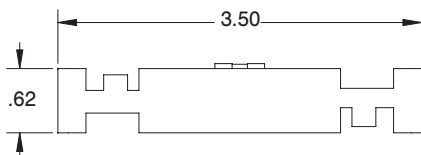
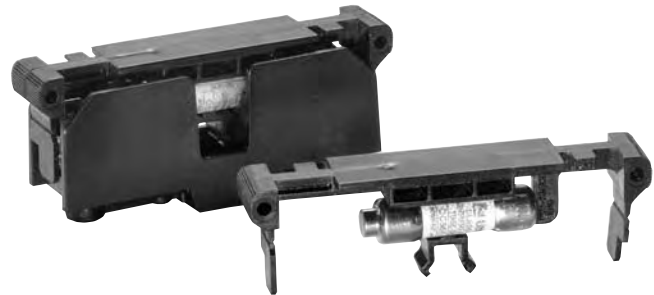
See page 33 for dimensional information

*Applications involving fuse holders other than Marathon may not provide IP20 finger protection

**Covers are recognized if used with recognized fuses

Cover/Puller (Catalog # CVR-MCC)

Marathon's Cover/Puller was designed for use with the Class CC (30 Amp), Midget and Class G (15 & 20 Amp only) Fuse Holders. Once installed, the Cover/Puller provides an easy and safe way to remove fuses. In application, protection is consistent with IEC Standard 529, designation IP20 (finger safe).



Fuse Holder Covers

Catalog #	Figure	A	B	C	D	E	F
CHR230	FIG 1	3.76	1.67	0.86	2.54	0.40	0.30
CHR260	FIG 1	5.80	2.16	1.07	3.66	0.47	0.42
CHR2100	FIG 2	7.38	2.41	1.49	4.90	0.38	0.46
CHR630	FIG 1	7.56	1.71	1.10	5.58	0.47	0.42
CHR660	FIG 1	8.30	2.37	1.35	6.32	0.35	0.42
CHR6100	FIG 2	9.34	2.45	1.49	6.90	0.38	0.46
CJ630	FIG 1	4.30	1.95	0.90	2.66	0.35	0.30
CJ660	FIG 1	5.04	2.07	1.35	3.10	0.35	0.42
CC630	FIG 3	3.83	1.69	0.74	2.34	0.34	0.30
CC660	FIG 1	4.58	1.95	0.90	2.66	0.35	0.42
CCM630	FIG 3	3.83	1.69	0.74	2.34	0.34	0.30
CJ6100-1C	FIG 4	1.94	1.38				
CJ6100-2C	FIG 4	3.94	3.38				
CJ6100-3C	FIG 4	5.22	4.66				

(2 mounting screws supplied)

(2 mounting screws supplied)

(4 mounting screws supplied)

mm = dim X 25.4

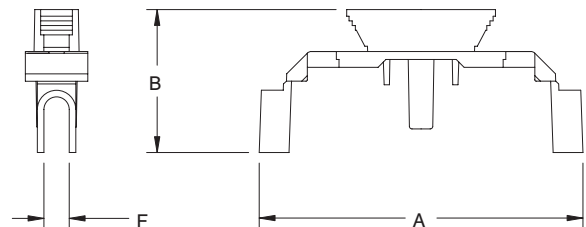
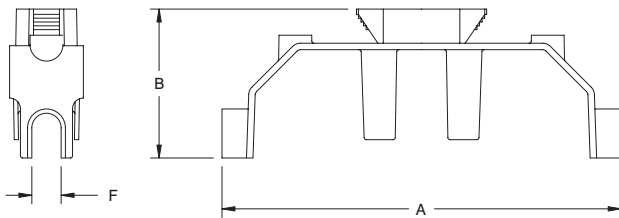
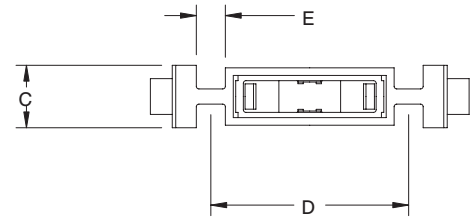
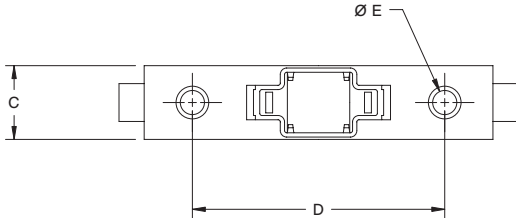


FIGURE 1:

FIGURE 2:

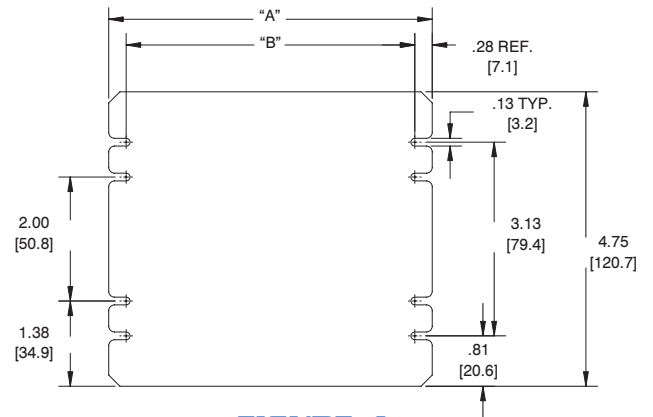
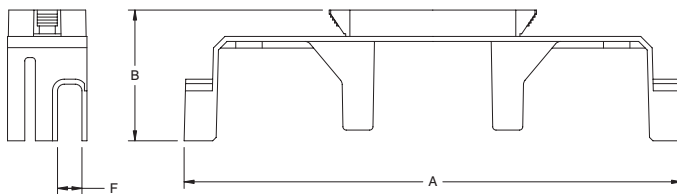
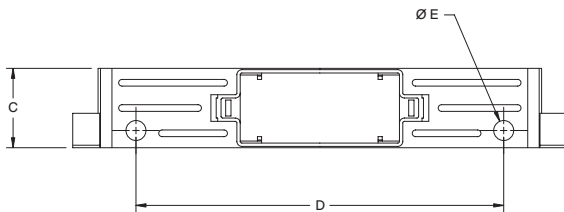


FIGURE 3:

FIGURE 4: