

Enclosed Power Blocks

COMING SOON: UL LISTED ENCLOSED POWER BLOCKS

Specifications:


Electrical

- 600 Volts AC/DC*
(IEC - 690 Volts AC/DC)
- Up to 510 Amps
- Wire Range 2/0 to 400 kcmil
- Flexible Stranded Wire Compliant

Mechanical

- Base, Gray Thermoplastic, 125°C (UL RTI)
- Flammability, UL 94 V-0
- Mounting: DIN or panel mount

Standards

- UL Recognized File No. XCFR2.E62806 (UL 1059)
- CSA Certified File No. LR19766 (CSA C22.2 No. 158)
-  (IEC 60947-7-1)
- IEC 60529, IP-20
- RoHS Compliant

Accessories (consult Cust. Service)

- White Markers to Identify Circuits
- Black Thermoplastic Safety Plugs
- Feed Spacing UL508A Adapter Plate



Shown left to right: EPBAD71, EPBAD74
EPBAD41, EPBAD44

Multiple Wire Ratings

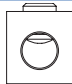
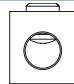
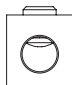

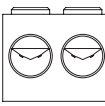
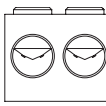
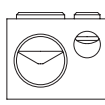
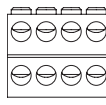
Copper Stranded Wire Only

#2 opening:	2/0 opening:
(2) #6 AWG	(2) #4 AWG
(2) #8 AWG	(2) #6 AWG
(2 to 4) #10 AWG	(2) #8 AWG
(2 to 4) #12 AWG	(2) #10 AWG
(2 to 4) #14 AWG	(2) #12 AWG
	(2) #14 AWG

Connector Wire Hole Size

Conductor opening:	Diameter of opening:
#2 - #14 AWG	.38"
2/0 - #14 AWG	.50"
250 kcmil - #6 AWG	.72"
400 kcmil - #6 AWG	.94"

+ Refer to www.marathonsp.com/PDFs/1000VCERating.pdf for details on availability of CE voltage ratings greater than 600 Volts

Catalog #	Amperage CU Wire 75°C	LINE SIDE			LOAD SIDE			SCCR, RMS SYM Amps 600 Volt Max
		Wire Range AWG/kcmil	Openings Per Pole	Connector Config.	Wire Range AWG/kcmil	Openings Per Pole	Connector Config.	
EPBXD41	175	2/0 - #14 AWG 70 - 2.5 mm ²	1		2/0 - #14 AWG 70 - 2.5 mm ²	1		100,000
EPBXD44	175	2/0 - #14 AWG 70 - 2.5 mm ²	1		#2 - #14 AWG 35 - 2.5 mm ²	4		100,000
EPBXD71	510	250 kcmil - #6 AWG 120 - 16 mm ²	2		250 kcmil - #6 AWG 120 - 16 mm ²	2		10,000
EPBXP71								50,000 - 100,000
EPBXD74	335	400 kcmil - #6 AWG 185 - 16 mm ² 2/0 - #14 AWG 70 - 2.5 mm ²	1		#2 - #14 35 - 2.5mm ²	8		10,000
EPBXP74			1					100,000

Ordering Code:

EPB

A

D

41

Connector Material:

A - Aluminum rated copper or aluminum wire

C - Copper rated copper wire only

D - Mount on 35 mm DIN rail or flat panel

P - Flat panel (for 71 and 74 only)

41 - (1) 2/0 to (1) 2/0
44 - (1) 2/0 to (4) #2
71 - (2) 250 kcmil to (2) 250 kcmil
74 - (1) 400 kcmil to (1) 2/0 to (8) #2

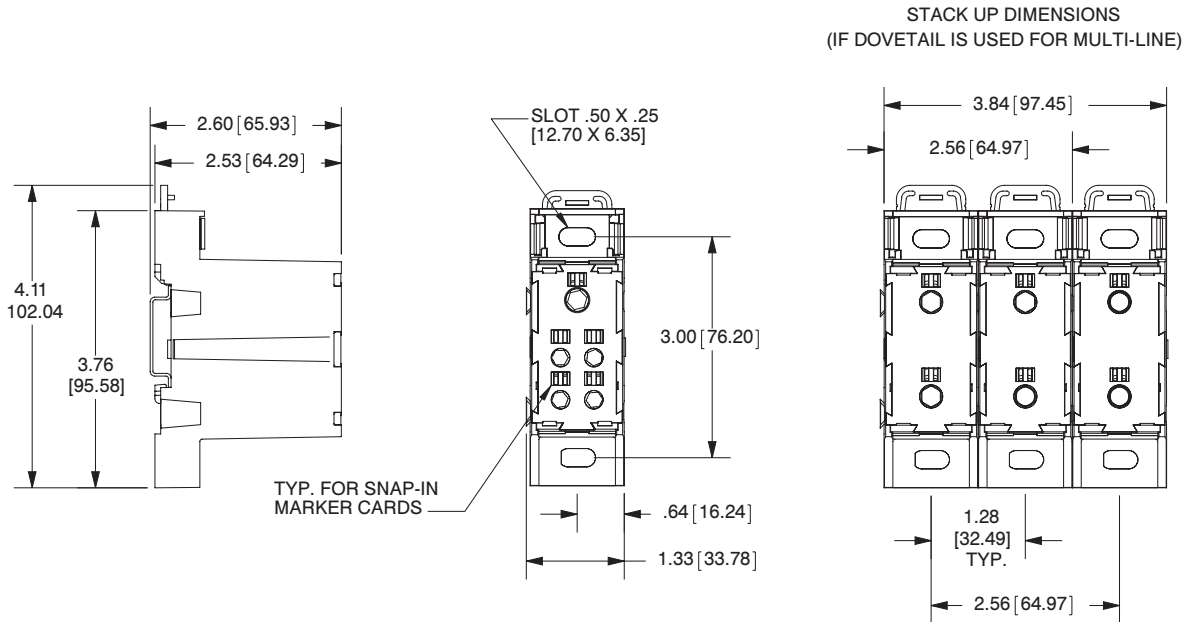
Note:

1) The ampacities are based on Table 310-16 of the NEC.

See page 40 for dimensional information.

Enclosed Power Block Dimensions

EPBXD41 & EPBXD44



EPBXX71 & EPBXX74

