

Accessories Ultrasonic sensors

Connectors, cables



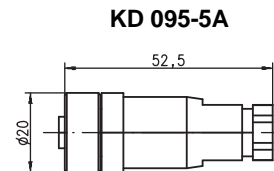
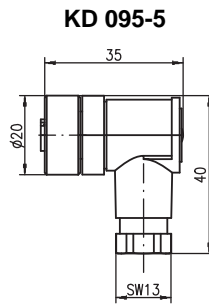
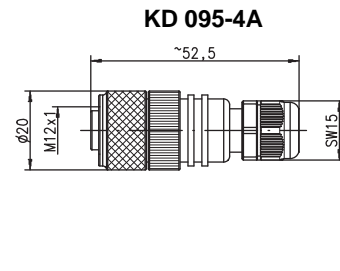
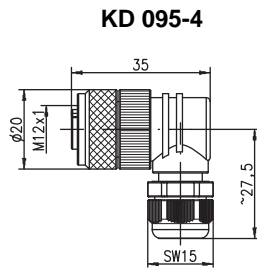
The following connectors are available for devices with M12 connectors: angled or straight, with and without cable connection.

Protection class (DIN 40050)
plugged and screwed down: IP 67

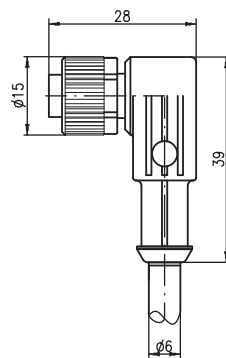
Important:

With throughbeam photoelectric sensors, a connector is required both for the transmitter and the receiver.

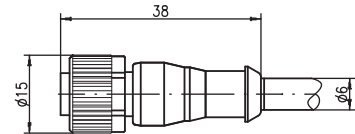
Dimensioned drawings




**K-D M12W-4P-...
K-D M12W-5P-...**

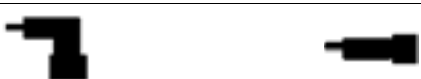


**K-D M12A-4P-...
K-D M12A-5P-...**




Selection table

M12 connector, user-configurable		
		
Connection type	Without cable, 4-pin	
Screw terminals	KD 095-4 Part No. 500 31324	KD 095-4A Part No. 500 31323
	Without cable, 5-pin	
Screw terminals	KD 095-5 Part No. 500 20502	KD 095-5A Part No. 500 20501

M12 connection cable with connector, single-sided		
		
Length	PVC cable sheath, 4-pin	
2m	K-D M12W-4P-2m-PVC Part No. 501 04543	K-D M12A-4P-2m-PVC Part No. 501 04542
5m	K-D M12W-4P-5m-PVC Part No. 501 04545	K-D M12A-4P-5m-PVC Part No. 501 04544
10m	K-D M12W-4P-10m-PVC Part No. 501 04547	K-D M12A-4P-10m-PVC Part No. 501 04546
20m	-	K-D M12A-4P-20m-PVC Part No. 501 04753
Length	PUR cable sheath, 4-pin	

2m	K-D M12W-4P-2m-PUR Part No. 501 04562	K-D M12A-4P-2m-PUR Part No. 501 04561
5m	K-D M12W-4P-5m-PUR Part No. 501 04564	K-D M12A-4P-5m-PUR Part No. 501 04563
10m	K-D M12W-4P-10m-PUR Part No. 501 04566	K-D M12A-4P-10m-PUR Part No. 501 04565

M12 connection cable with connector, single-sided		
		
Length	PVC cable sheath, 5-pin	
2m	K-D M12W-5P-2m-PVC Part No. 501 04556	K-D M12A-5P-2m-PVC Part No. 501 04555
5m	K-D M12W-5P-5m-PVC Part No. 501 04558	K-D M12A-5P-5m-PVC Part No. 501 04557
10m	K-D M12W-5P-10m-PVC Part No. 501 04560	K-D M12A-5P-10m-PVC Part No. 501 04559
Length	PUR cable sheath, 5-pin	
2m	K-D M12W-5P-2m-PUR Part No. 501 04568	K-D M12A-5P-2m-PUR Part No. 501 04567
5m	K-D M12W-5P-5m-PUR Part No. 501 04762	K-D M12A-5P-5m-PUR Part No. 501 04569

Connectors, cables


Accessories Ultrasonic sensors

Mounting systems

BT 8-0 (Part No. 500 36196)

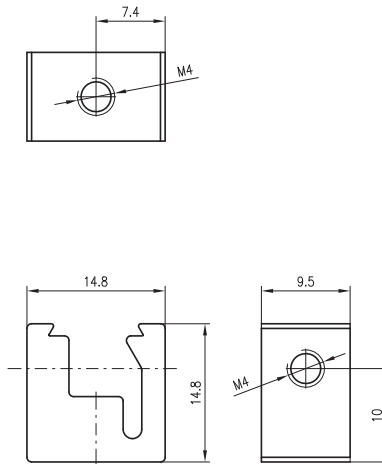


BT 8 (Part No. 500 36195)

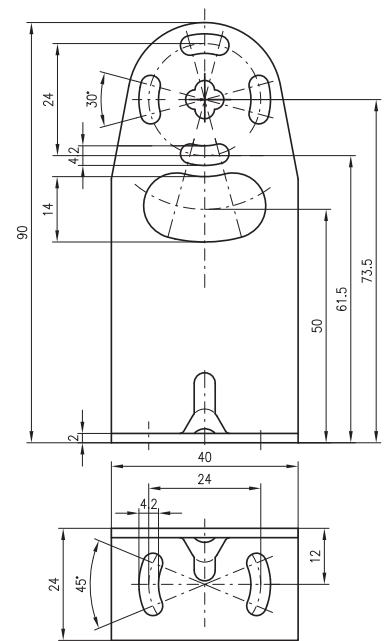


Dimensioned drawings

BT 8-0

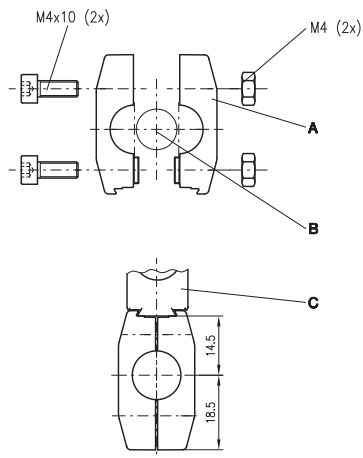


BT 8



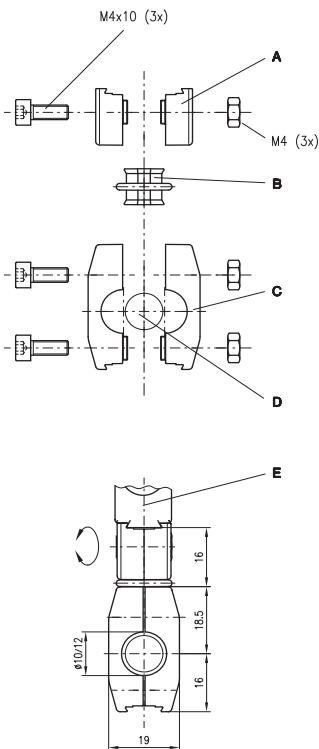
Dimensioned drawings

UMS 8-D...



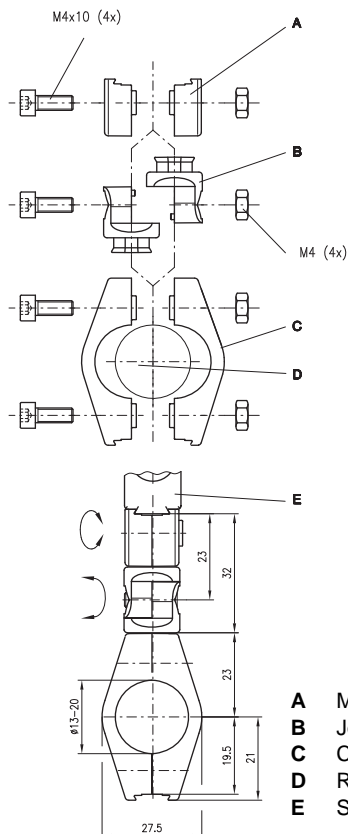
- A** Clamp
- B** Rod
- C** Sensor

UMS 8.1-D...



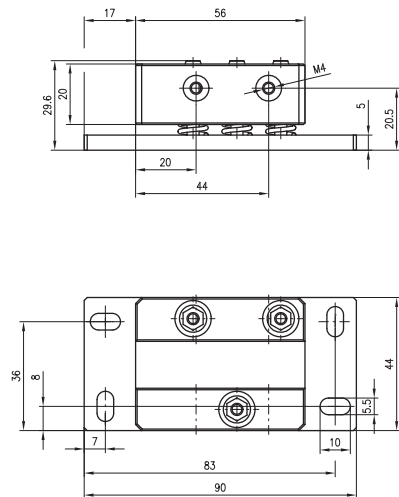
- A** Mount
- B** Joint
- C** Clamp
- D** Rod
- E** Sensor

UMS 8.2-D...



- A** Mount
- B** Joint
- C** Clamp
- D** Rod
- E** Sensor

BT 8-ARH



Mounting systems

UMS 8-D10 (Ø10mm, Part No. 500 35020)
 UMS 8-D12 (Ø12mm, Part No. 500 35021)
 UMS 8-D14 (Ø14mm, Part No. 500 35022)



UMS 8.1-D10 (Ø10mm, Part No. 500 35023)
 UMS 8.1-D12 (Ø12mm, Part No. 500 35024)
 UMS 8.1-D14 (Ø14mm, Part No. 500 35025)



UMS 8.2-D10 (Ø10mm, Part No. 500 35026)
 UMS 8.2-D12 (Ø12mm, Part No. 500 35027)
 UMS 8.2-D14 (Ø14mm, Part No. 500 35028)



BT 8-ARH (Part No. 500 35030)



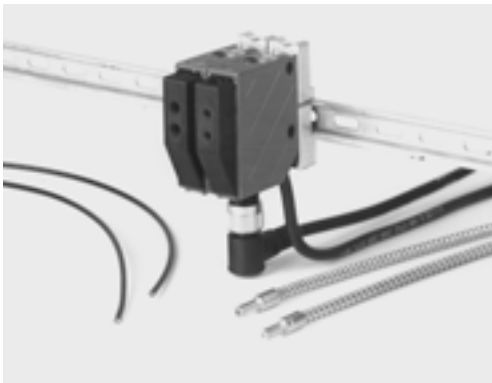
Accessories Ultrasonic sensors

Mounting systems

BT 8-D10 (Ø10mm, Part No. 500 35017)
 BT 8-D12 (Ø12mm, Part No. 500 35018)
 BT 8-D14 (Ø14mm, Part No. 500 35019)



BT 8-C15 (Part No. 500 35016)

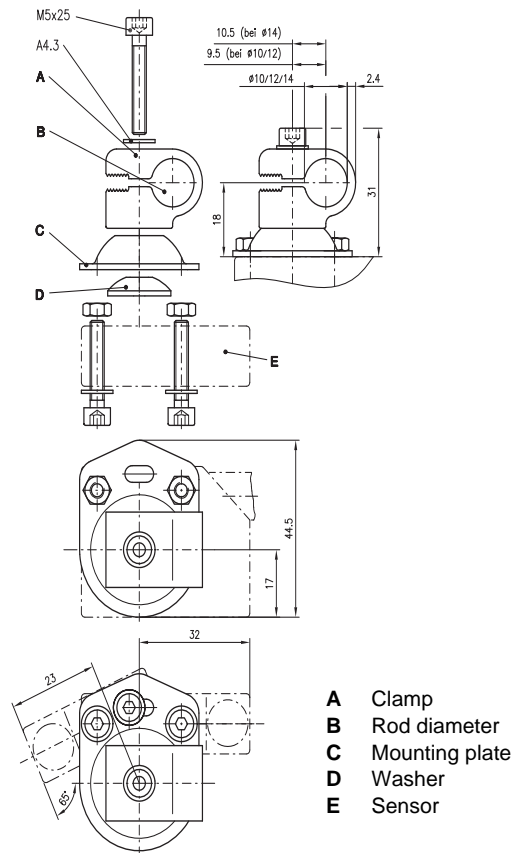


BT 8-C35x7,5 (Part No. 500 35015)

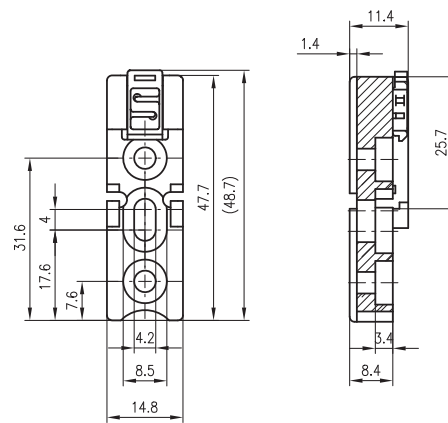


Dimensioned drawings

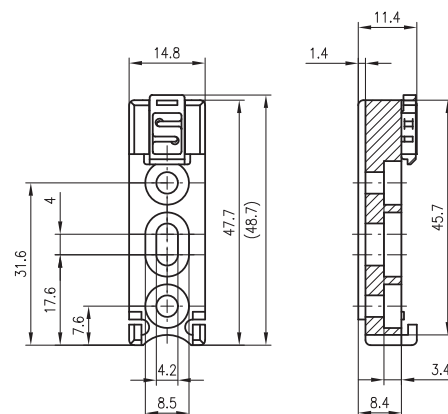
BT 8-D...



BT 8-C15

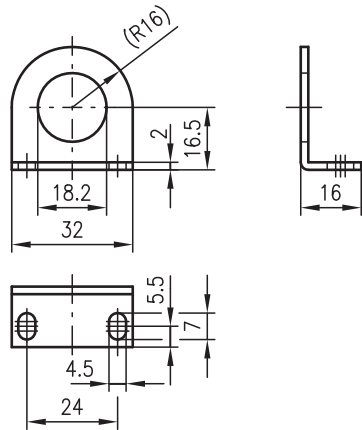


BT 8-C35x7,5

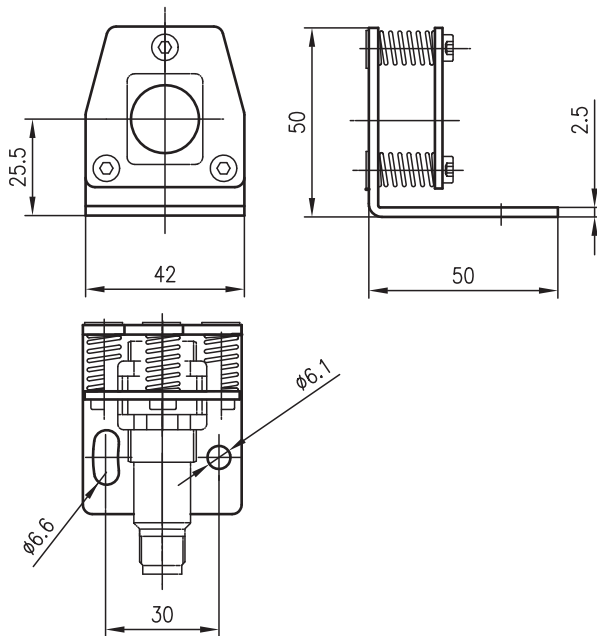


Dimensioned drawings

BT 318

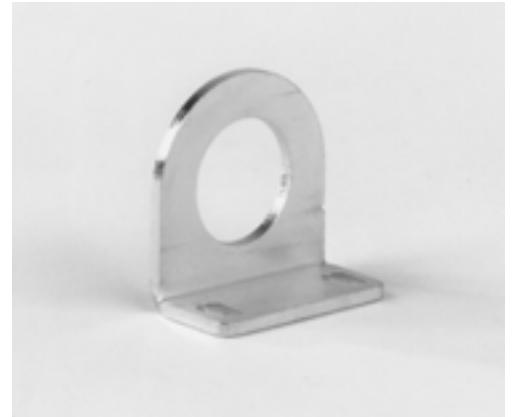


BT 318-ARH



Mounting systems

BT 318



BT 318-ARH

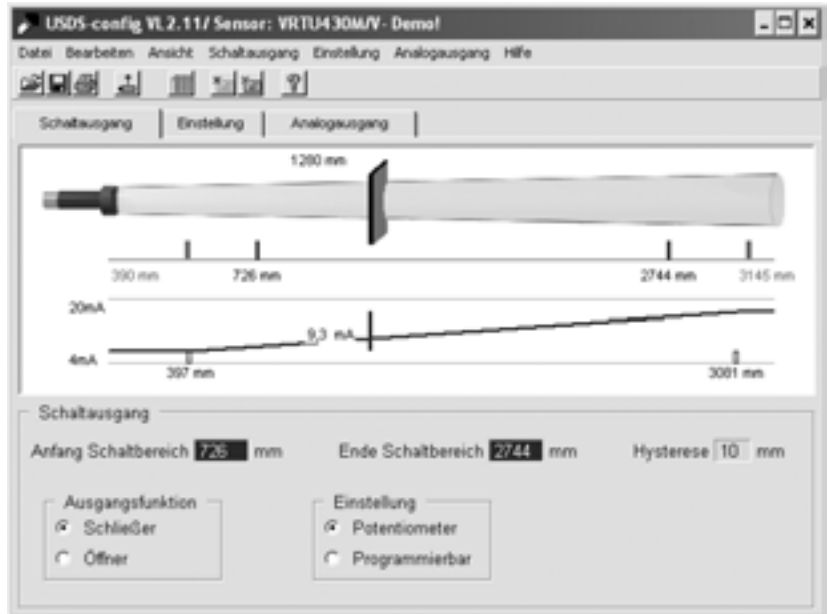


Accessories Ultrasonic sensors

Configuration software

USDS-Config

(free download from www.leuze.com)



Programming unit

PGU 01 (Part No. 500 36559)



The **USDS-Config** software is supplied with the PGU 01 programming unit