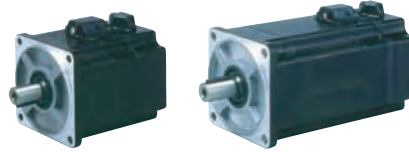


Motion
Automation
Support

MAS Series Servo Motors



Compact, responsive, economical



Lenze's MAS Series of synchronous AC servo motors are ideally suited for operation with the Model 94 SimpleServo® and the Model 940 PositionServo. MAS Series motors yield a high torque / frame size ratio throughout the power range from 100 to 1000 W and resulting torque range from 0.35 to 3.9 N-m. The 2000 ppr encoder connects directly to the SimpleServo or PositionServo controller for a fast and effective matched servo system.

Standard Features:

- For operation with 240VAC Servo Drive Output.
- 2000 ppr Encoder for precise operation.
- 1m Motor and Encoder cables with IP40 CPC or IP65 Intercontec M17 connectors.
- UL recognized, satisfies CSA requirements, CE-compliant.
- IP55 self ventilated frame with smooth surface.
- Compact design with metric mounting flange.
- Economical solution for servo-motion control applications.

Lenze

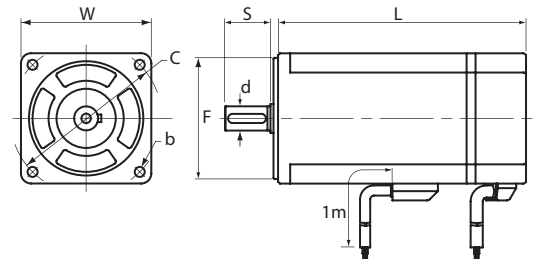
Models and Ratings

Motor Type	n_N [rpm]	M_0 [Nm]	M_{max} [Nm]	M_N [Nm]	P_N [W]	I_N [A]	n_{max} [rpm]	J^1 [kgcm ²]	m^1 [kg]	Motor Dimensions in mm						
										W	L^1	F	b	C	d	S
MAS05B30...	3000	0.353	0.98	0.319	100	1.4	4500	0.096	0.74	54	86	50	4.5	60	8	20
MAS05D30...		0.686	1.96	0.637	200	2.1		0.168	1.07	54	105	50	4.5	60	11	25
MAS07C30...		1.372	3.92	1.274	400	3.8		0.735	1.89	76	113	70	5.5	90	14	25
MAS08E30...		2.94	8.82	2.381	750	7.7		1.921	3.65	86	149	80	6.6	100	16	30
MAS08H30...		3.92	11.76	3.185	1000	8.6		2.646	4.80	86	172	80	6.6	100	16	30

MAS motors are available in several configurations as specified by the Model Number three digit suffix:

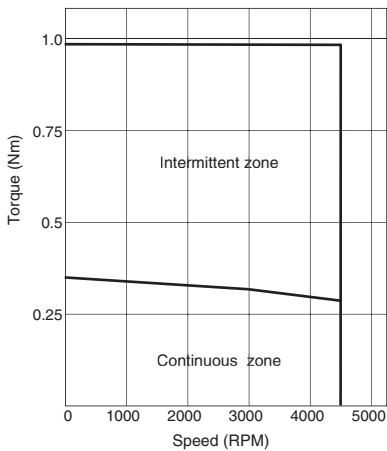
¹ without brake, includes encoder

- MB0: M17 connectors on motor and encoder cables.
- PBO: CPC circular plastic connectors on motor and encoder cables.
- MP1: Motor with brake. M17 connectors on motor and encoder cables.
- PP1: Motor with brake. CPC connectors on motor and encoder cables.

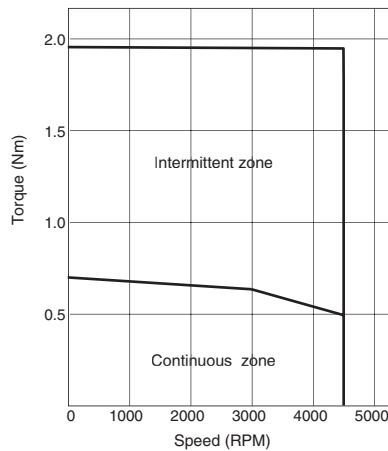


Speed-Torque Curves

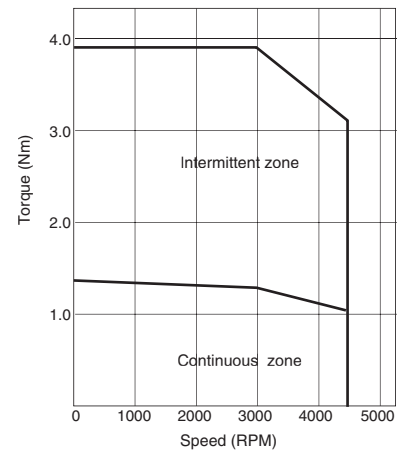
100 W Motor: MAS05B30
Drive: E94S020S2F



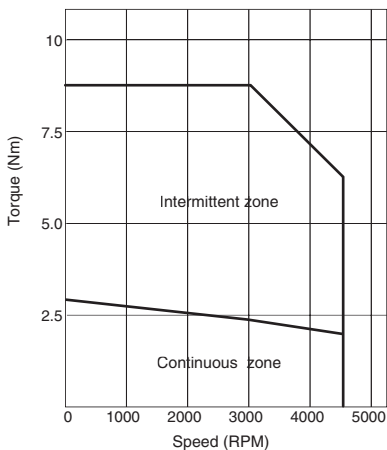
200 W Motor: MAS05D30
Drive: E94S040S2F



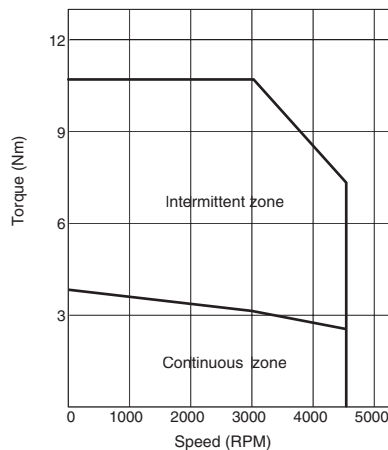
400 W Motor: MAS07C30
Drive: E94S080S2F



750 W Motor: MAS08E30
Drive: E94S100S2F



1000 W Motor: MAS08H30
Drive: E94S100S2F



The MAS Motor Speed-Torque Curves apply to both Model 94 SimpleServo and Model 940 PositionServo Controllers of equivalent ratings.