

TYPE 2 SAFETY CONTROL UNITS



- *Control of 1 or 2 emitter-receiver photoelectric sensors*
- *Complete autodiagnostic during Start and Test*
- *Manual activation and Restart*
- *Double safety relay output*

SB-BWS-T2 SERIES

The control units of the **SB-BWS-T2** series are suitable to type 2 safety systems and can be connected to one or two emitter-receiver photocell couples, available in the tubular M18 format, either in the plastic S5-F/G-ST2 or metal S10-F/G-ST2 versions for distances reaching 8 m, or in the parallelepiped S30-F/G-ST2 model reaching 50 m.



At any interruption of a photocell couple's beam, the contacts of the two relay outputs open causing the safety block of the controlled machinery.

The activation and the Restart of the control unit's output are both obtained closing the 'Start' contact, while the 'Test1' and 'Test2' contacts check the systems without physically interrupting the light beam.

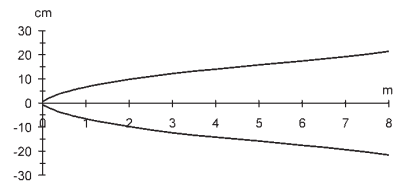
The units operating status is signalled by three LEDs: green 'Free' with free beams, yellow 'Test' during autodiagnostic, red 'Alarm' with one or two interrupted beams.



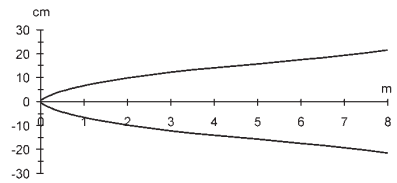
TECHNICAL DATA

Power supply:	24 Vdc \pm 10%, reverse polarity protection
Consumption:	180 mA max.
Inputs for photocells:	1 or 2 emitter-receiver safety photocell couples (S5-F/G-ST2, S10-F/G-ST2, S30-F/G-ST2 series)
Operating distance:	0 ... 8 m with S5-F/G-ST2 or S10-F/G-ST2, 0 ... 50 m with S30-F/G-ST2
Inputs:	Start - NO with >30ms closed time, Test1 - NC with >30ms opened time, Test2 - NC with >30ms opened time
Indicators:	green FREE LED (free beams) yellow TEST LED (autodiagnostic) red ALARM LED (interrupted beams)
Output type:	2 safety relays with NO contact
Output current:	4 A max. (250 Vac)
Response time:	20 ms max.
Autodiagnostic time (START):	165 ms + closing contact time
Auxiliary functions:	Test, Start
Connection:	terminal block with 30 screw contacts
Mounting:	DIN rail, or 2 holes for M4 screws
Safety category:	type 2
Electrical protection:	class 2
Mechanical protection:	IP20
Housing material:	plastic
Weight:	510 g max.
Operating temperature:	0 ... +50 °C
Storage temperature:	-10 ... +60 °C
Reference standard:	EN 954-1, IEC 61496-1, IEC 61496-2
Certifications:	 

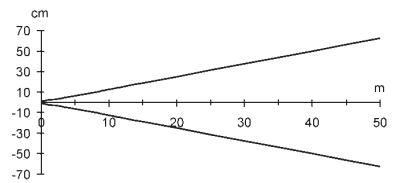
DETECTION DIAGRAMS WITH Sx-F/G-ST PHOTOCELL SERIES



S5-F/G-ST2



S10-F/G-ST2

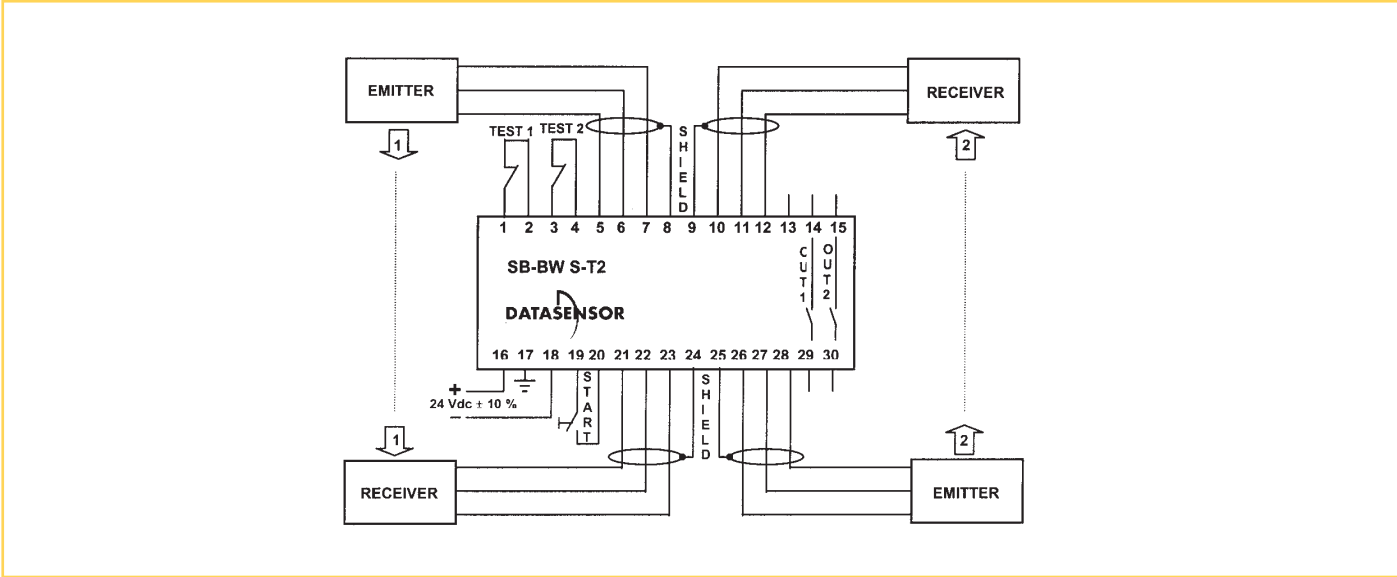


S30-F/G-ST2

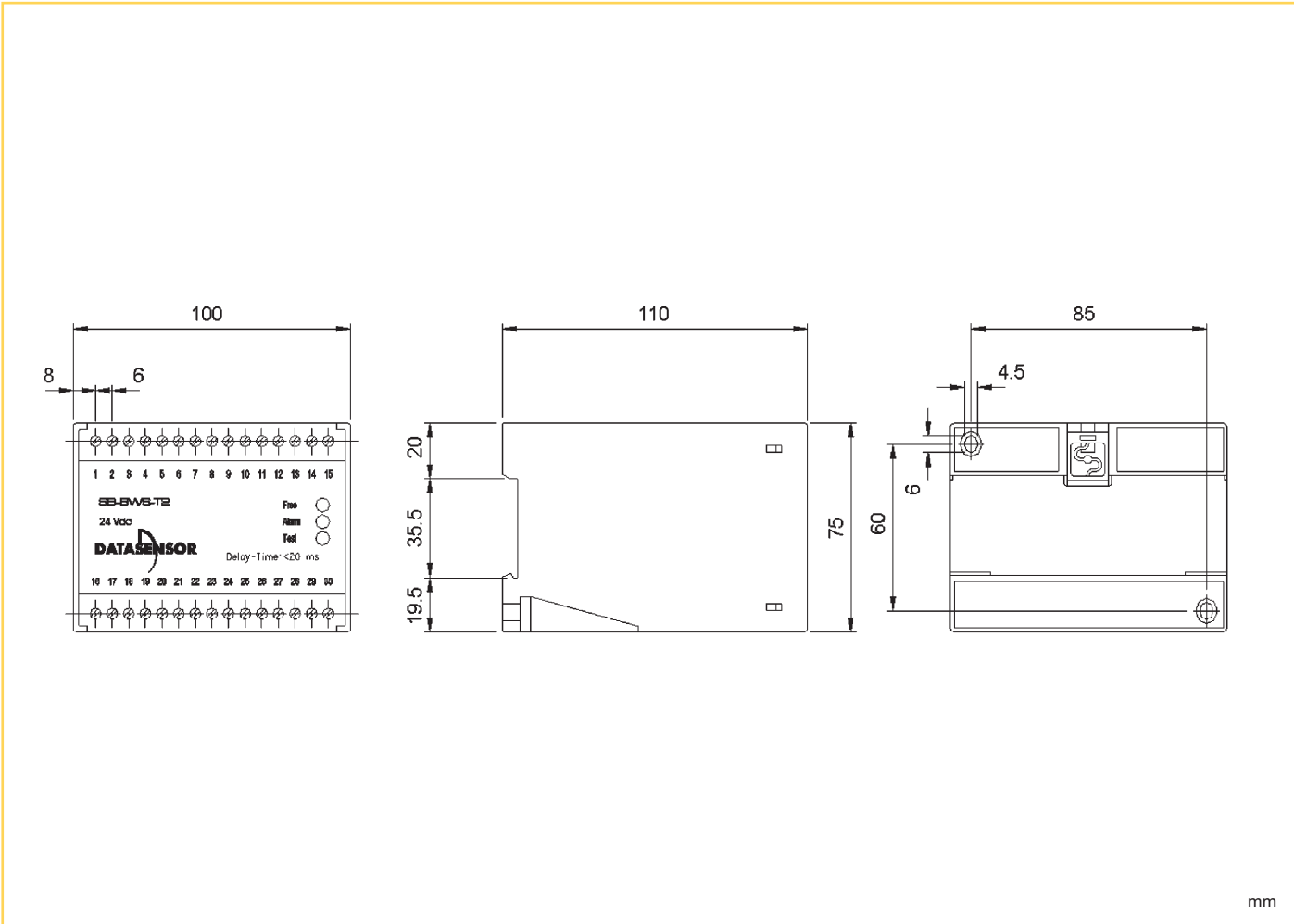
Effective aperture angle (EAA)

For further information please refer to Sx-F/G-ST safety photocell series

CONNECTIONS



DIMENSIONS



mm



MODELS

MODEL	DESCRIPTION	CODE N°
SB-BWS-T2	type 2 control unit	G6211110

ACCESSORIES

MODEL	DESCRIPTION	CODE N°
SE-DM 150	deviating mirror	95ACC1900

Please refer also to Sx-F/G-ST safety photocell series

SAFETY DEVICES

CTi Automation - Phone: 800.894.0412 - Fax: 208.368.0415
Web: www.ctiautomation.net - e.mail: info@ctiautomation.net

Distributed by:

