

Fincor DC Motors

Shunt Wound DC Motors - Series 9200

Fincor Series 9200 motors are industrial rated general purpose DC motors designed for use with single-phase DC drives. Series 9200 motors are shunt-wound, or stabilized shunt-wound and are suitable for constant torque-adjustable speed operation by armature voltage control to base speed. The field winding is typically excited by a separate power supply. With constant armature voltage and field excitation, a shunt-wound motor offers relatively flat speed-torque characteristics.



Shunt Wound DC Motors - Series 9200

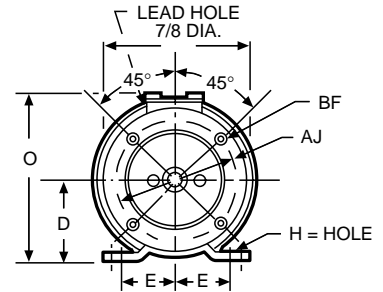
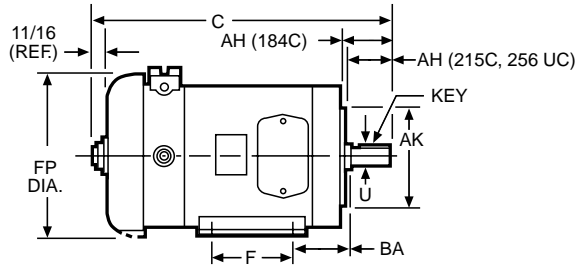
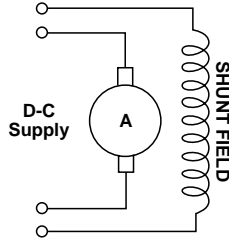
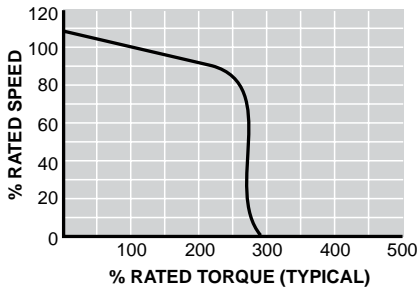
HP	Base Speed	Armature Volts	Armature Amps	Field Volts	Enclosure	Frame	Stock Number	Order Code	Weight (lbs)
1/6	1750	90	2	50/100	TEFC	56C	5002698	9201609TFB	23
1/4	1750	90	2.8	50/100	TEFC	56C	5002319	9202509TFB	24
1/3	1750	90	3.5	50/100	TEFC	56C	5002396	9203309TFB	24
1/2	1750	90	5.4	50/100	TEFC	56C	5002291	9205009TFB	29
		180	2.6	100/200	TEFC	56C	5002454	9205018TFB	29
3/4	1750	90	8.1	50/100	TEFC	56C	5002320	9207509TFB	34
		180	3.8	100/200	TEFC	56C	5002292	9207518TFB	34
1	1750	90	10.5	50/100	TEFC	56C	5002401	9210009TFB	52
		180	5.5	100/200	TEFC	56C	5002649	9210018TFB	53
1.5	1750	180	8.2	100/200	DPG	184C	5002378	9215018DPB	84
					TEFC	184C	5002648	9215018TFB	84
2	1750	180	11.6	100/200	DPG	184C	5002631	9220018DPB	98
					TEFC	184C	5002632	9220018TFB	98
3	1750	180	15.1	100/200	DPG	215C	5002248	9230018DPB	137
					TEFC	215C	5002284	9230018TFB	137
5	1750	180	24	100/200	DPG	256UC	5002297	9250018DPB	304
					TEFC	256UC	5002296	9250018TFB	304

Options for Model TFB & DPB Series 9200 DC Motors

Description	Field Installed Order Code	Factory Installed Order Suffix
DC Tachometer Generator Type XPY, 50V/1000 rpm with mounting hardware	1/6 to 3/4 hp	106343222
	1 hp	106343223
	1.5 to 2 hp	106343224
	3 hp DPG	106343225
	3 hp TEFC	106343226
	5 hp DPG	106343227
Mounting Hardware Only for XPY or Fincor DC Tachometer Generator for	1/6 to 3/4 hp	104355801
	1 hp	104355809
	1.5 to 2 hp	104355808
	3 hp DPG	104355804
	3 hp TEFC	104355805
	5 hp DPG	104355806
Thermostats		-B5064A

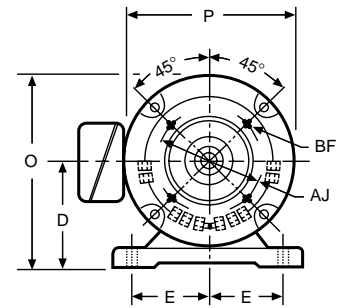
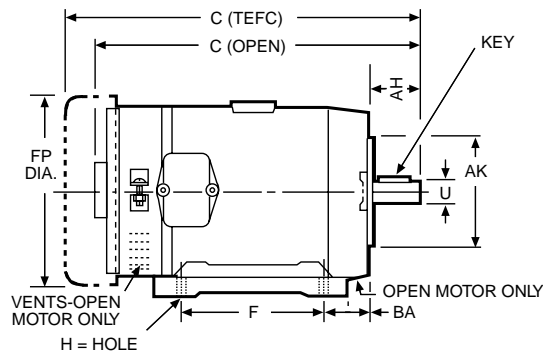
Field Installed items are shipped "loose" for customer mounting
Consult Factory for Availability

SPEED TORQUE CURVE



TBF Models

HP	Frame Size ¹	Model Number	Dimensions, Inches ²														
			C	D	E	F	H	Key	O	P	U	AH	AJ	AK	BA	BF(tap)	FP
1/6	56C	9201609TFB	13.25	3.5	2.438	3.0 or 4.0	0.344 slot	0.188	7.25	5.688	0.625	2.06	5.875	4.5	2.75	3/8-16	6.125
1/4		9202509TFB	13.25	3.5	2.438	3.0 or 4.0	0.344 slot	0.188	7.25	5.688	0.625	2.06	5.875	4.5	2.75	3/8-16	6.125
1/3		9203309TFB	13.25	3.5	2.438	3.0 or 4.0	0.344 slot	0.188	7.25	5.688	0.625	2.06	5.875	4.5	2.75	3/8-16	6.125
1/2		9205009TFB	14.25	3.5	2.438	3.0 or 4.0	0.344 slot	0.188	7.25	5.688	0.625	2.06	5.875	4.5	2.75	3/8-16	6.125
		9205018TFB	14.25	3.5	2.438	3.0 or 4.0	0.344 slot	0.188	7.25	5.688	0.625	2.06	5.875	4.5	2.75	3/8-16	6.125
3/4		9207509TFB	14.75	3.5	2.438	3.0 or 4.0	0.344 slot	0.188	7.25	5.688	0.625	2.06	5.875	4.5	2.75	3/8-16	6.125
		9207518TFB	14.75	3.5	2.438	3.0 or 4.0	0.344 slot	0.188	7.25	5.688	0.625	2.06	5.875	4.5	2.75	3/8-16	6.125
1		9210009TFB	16.125	3.5	2.438	3.0	0.406 slot	0.188	7.75	6.625	0.625	2.06	5.875	4.5	2.75	3/8-16	7.188
	9210018TFB	16.125	3.5	2.438	3.0	0.406 slot	0.188	7.75	6.625	0.625	2.06	5.875	4.5	2.75	3/8-16	7.188	



TBF & DPB Models

HP	Frame Size ¹	Model Number	Dimensions, Inches ²														
			C	D	E	F	H	Key	O	P	U	AH	AJ	AK	BA	BF(tap)	FP
1-1/2	184C	9215018DPB	15.438	4.5	3.75	5.5	0.406	0.188	8.375	7.75	0.875	2.125	5.875	4.5	2.75	3/8-16	-
		9215018TFB	17.375	4.5	3.75	5.5	0.406	0.188	8.375	7.75	0.875	2.125	5.875	4.5	2.75	3/8-16	8.5
2	184C	9220018DPB	18.625	4.5	3.75	5.5	0.406	0.188	8.375	7.875	0.875	2.125	5.875	4.5	2.75	3/8-16	8.5
		9220018TFB	18.625	4.5	3.75	5.5	0.406	0.188	8.375	7.75	0.875	2.125	5.875	4.5	2.75	3/8-16	8.5
3	215C	9230018DPB	20.938	5.25	4.25	7.0	0.406	0.25	9.938	9.375	1.125	2.75	7.25	8.5	3.5	1/2-13	-
		9230018TFB	21.188	5.25	4.25	7.0	0.406	0.25	9.938	9.375	1.125	2.75	7.25	8.5	3.5	1/2-13	10.188
5	256UC	9250018DPB	24.75	6.25	5.0	10.0	0.531	0.313	11.938	11.375	1.375	3.50	7.25	8.5	4.25	1/2-13	-
		9250018TFB	25.875	6.25	5.0	10.0	0.531	0.313	11.938	11.375	1.375	3.50	7.25	8.5	4.25	1/2-13	12.375

Notes:

- 1 1750 RPM Base Speed only.
- 2 Dimensions for estimating only.