

DIE-CAST ALUMINUM BOXES

AN-SERIES

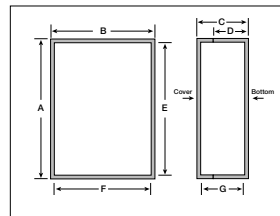
NEMA DIE-CAST ALUMINUM BOX WITH HINGED COVER

Design Features

- ◆ Hinged cover allows for easy access without risk of damage to cover
- ◆ External mounting brackets (included) allow the box to be mounted on a wall or panel without having to remove the cover and exposing internal components to the environment
- ◆ Rugged aluminum alloy die-cast box with NEMA 1, 2, 4, 4X, 12, and 13 and IP65 ratings
- ◆ Available in black powder coat finish
- ◆ Gasketed cover attaches with screws
- ◆ Easily machined and modified to your particular requirements

Finish

Smooth black powdercoat



Catalog No.	External Dimensions				Internal Dim.			Wt.
NEMA Hinged	A	B	C	D	E	F	G	Oz.
AN-2900	3.95"	3.04"	1.98"	1.39"	3.69"	2.43"	1.73"	9.75
AN-2901	4.54"	3.88"	2.19"	1.60"	4.28"	3.28"	1.93"	14.20

DIE-CAST ALUMINUM BOXES

AN-SERIES

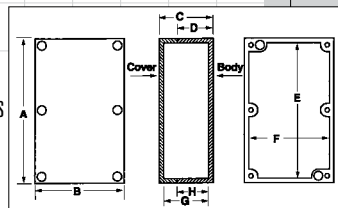
NEMA DIE-CAST ALUMINUM BOX



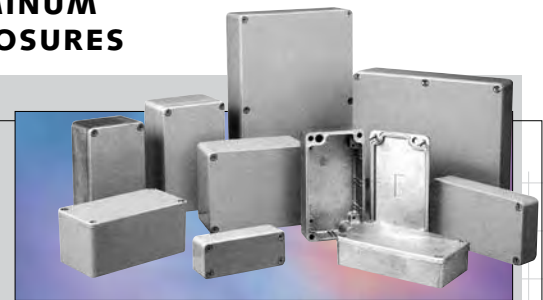
Die-cast in aluminum alloy and resistant to atmospheric and marine corrosion, these enclosures are ideal for housing sensitive electronic assemblies and pneumatic, hydraulic, and electrical devices in wet and dirty commercial and industrial environments.

Design Features

- ◆ Designed to IP65 of IEC 529 and NEMA 1, 2, 4, 4X, 12, and 13 specifications
- ◆ Wallmounting holes (on Style A) and cover attaching screws are outside the sealing area thus preventing ingress of moisture and dust. (Style B does not have wallmounting holes)
- ◆ Cover incorporates a recessed gasket
- ◆ Internal bosses for mounting PCBs horizontally or for connecting terminals, ground, etc. (Requires hardware kit #57-58, ordered separately)
- ◆ Most models have internal guide slots for mounting PCB assemblies vertically
- ◆ Cover mounting holes are roll threaded and screws are recessed
- ◆ Tested and passed UL508-4 requirements
- ◆ 80°C maximum operating temperature
- ◆ Optional brackets. See page 46



SEALED DIE-CAST ALUMINUM ENCLOSURES



Specifications

Body & cover: Aluminum Alloy #ADC-12
Gasket: Silicone
Cover Screws: M4 Stainless Steel, non-magnetic

Finishes

Natural finish or Gray (add suffix G)

For enclosures with external mounting brackets, see page 42.

Catalog Numbers	External Dimensions				Internal Dimensions*				Internal Grounding or PCB Mounting Holes		Wall Thickness	Wgt. Oz.		
	Style A	Style B	A	B	C	D	E	F	G	H			.125" Dia. ¹	.136" Dia. ¹
AN-1300			3.54"	1.42"	1.18"	.98"	3.17"	1.04"	.97"	.87"	2	0	.11"	5
AN-1301			2.52"	2.28"	1.38"	1.17"	2.19"	1.95"	1.17"	1.07"	2	0	.13"	5
AN-1302			4.53"	2.56"	1.18"	.98"	4.13"	2.15"	.98"	.88"	4	0	.13"	8
AN-1303			4.53"	2.56"	2.17"	1.96"	4.03"	2.07"	1.96"	1.86"	4	0	.13"	12
AN-1304			4.53"	3.54"	2.17"	1.96"	4.01"	3.03"	1.96"	1.86"	4	0	.13"	14
AN-1305			5.83"	4.25"	2.95"	2.52"	5.34"	3.76"	2.71"	2.42"	4	0	.13"	24
AN-1306			6.73"	4.76"	2.17"	1.73"	6.27"	4.30"	1.89"	1.60"	4	0	.13"	24
AN-1307			8.75"	5.75"	2.17"	1.98"	8.27"	5.29"	1.95"	1.85"	4	0	.12"	49
AN-1308			8.75"	5.75"	3.25"	1.98"	8.27"	5.29"	3.02"	1.85"	4	0	.12"	70
AN-1309			4.75"	4.75"	4.00"	3.20"	4.38"	4.38"	3.80"	3.10"	4	0	.13"	30
AN-1310			6.25"	6.25"	4.00"	3.20"	5.88"	5.88"	3.80"	3.10"	4	0	.13"	35
AN-1311			1.97"	1.77"	1.12"	.89"	1.78"	1.58"	.93"	.77"	0	1	.12"	2.6
AN-1312			3.85"	2.52"	1.35"	.99"	3.61"	2.28"	1.12"	.87"	0	4	.12"	6.9
AN-1313			4.90"	3.14"	1.59"	.99"	4.60"	2.83"	1.36"	.87"	3	4	.12"	12.5
AN-1314			4.90"	3.14"	2.26"	1.67"	4.60"	2.83"	2.03"	1.54"	3	4	.12"	15.1
AN-1315			5.91"	2.52"	1.45"	1.04"	5.63"	2.24"	1.13"	.88"	0	4	.15"	12.5
AN-1316			6.29"	3.93"	2.37"	1.58"	5.98"	3.62"	2.13"	1.46"	1	6	.12"	22.9
AN-1317			6.29"	3.93"	3.19"	2.40"	5.98"	3.62"	2.95"	2.28"	1	6	.12"	27.4

* Reference Only - Request drawing for internal configuration and dimensions.

¹ Use hardware kit #57-58 (contains [4] M3.5 x 6mm self tapping screws, [4] M3.5 lock washers, [4] M4 x 6mm self tapping screws, and [4] M4 lock washers).

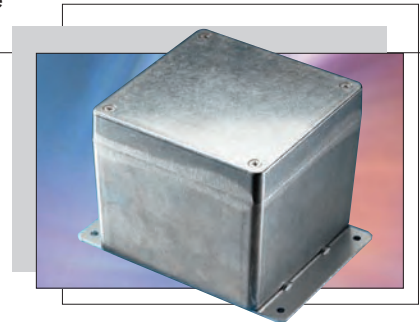
DIE-CAST ALUMINUM BOXES



AN-SERIES

NEMA DIE-CAST ALUMINUM BOX WITH MOUNTING BRACKET

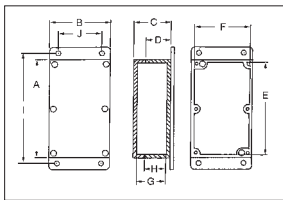
Die-cast aluminum NEMA boxes meet NEMA 1, 2, 4, 4X, 12, and 13 with external mounting brackets increasing both adaptability and use. These boxes allow for the mounting of the box without having to remove the cover, thereby possibly compromising the NEMA rating.



Catalog Numbers	External Dimensions				Internal Dimensions*				Mtg. Dim.		Internal Grounding or PCB Mounting Holes		Wall	Wgt.
	A	B	C	D	E	F	G	H	I	J	.125" Dia.†	.136" Dia.†	Thickness	Oz.
AN-2800	3.54"	1.42"	1.18"	.98"	3.17"	1.04"	.97"	.87"	4.25"	—	2	0	.11"	6.0
AN-2801	2.52"	2.28"	1.38"	1.17"	2.19"	1.95"	1.17"	1.07"	3.13"	1.25"	2	0	.13"	6.0
AN-2802	4.53"	2.56"	1.18"	.98"	4.13"	2.15"	.98"	.88"	5.19"	1.62"	4	0	.13"	10.0
AN-2803	4.53"	2.56"	2.17"	1.96"	4.03"	2.07"	1.96"	1.86"	5.19"	1.62"	4	0	.13"	14.0
AN-2804	4.53"	3.54"	2.17"	1.96"	4.01"	3.03"	1.96"	1.86"	5.25"	2.56"	4	0	.13"	16.0
AN-2805	5.83"	4.25"	2.95"	2.52"	5.34"	3.76"	2.71"	2.42"	6.38"	3.25"	4	0	.13"	28.0
AN-2806	6.73"	4.76"	2.17"	1.73"	6.27"	4.30"	1.89"	1.60"	7.38"	3.81"	4	0	.13"	28.0
AN-2807	8.75"	5.75"	2.17"	1.98"	8.27"	5.29"	1.95"	1.85"	9.38"	4.75"	4	0	.12"	57.0
AN-2808	8.75"	5.75"	3.25"	1.98"	8.27"	5.29"	3.07"	1.85"	9.38"	4.75"	4	0	.12"	78.0
AN-2809	4.75"	4.75"	4.00"	3.20"	4.38"	4.38"	3.80"	3.10"	5.25"	3.25"	4	0	.13"	33.5
AN-2810	6.25"	6.25"	4.00"	3.20"	5.88"	5.88"	3.80"	3.10"	6.75"	5.12"	4	0	.13"	40.0
AN-2811	1.97"	1.77"	1.12"	.89"	1.78"	1.58"	.93"	.77"	2.63"	.87"	0	2	.12"	3.6
AN-2812	3.85"	2.52"	1.35"	.99"	3.61"	2.28"	1.12"	.87"	4.50"	1.62"	0	4	.12"	9.0
AN-2813	4.90"	3.14"	1.59"	.99"	4.60"	2.83"	1.36"	.87"	5.56"	2.25"	3	4	.12"	16.0
AN-2814	4.90"	3.14"	2.26"	1.67"	4.60"	2.83"	2.03"	1.54"	5.62"	2.25"	3	4	.12"	18.5
AN-2815	5.91"	2.52"	1.45"	1.04"	5.63"	2.24"	1.13"	.88"	6.56"	1.62"	0	4	.15"	16.0
AN-2816	6.29"	3.93"	2.37"	1.58"	5.98"	3.62"	2.13"	1.46"	6.94"	3.00"	1	6	.12"	28.0
AN-2817	6.29"	3.93"	3.19"	2.40"	5.98"	3.62"	2.95"	2.28"	6.94"	3.00"	1	6	.12"	33.5

* Reference Only - Request drawing for internal configuration and dimensions.

† Use hardware kit #57-58 (contains [4] M3.5 x 6mm self tapping screws, [4] M3.5 lock washers, [4] M4 x 6mm self tapping screws, and [4] M4 lock washers).



Finishes

Natural or smooth black powdercoat (add -B suffix to part number)

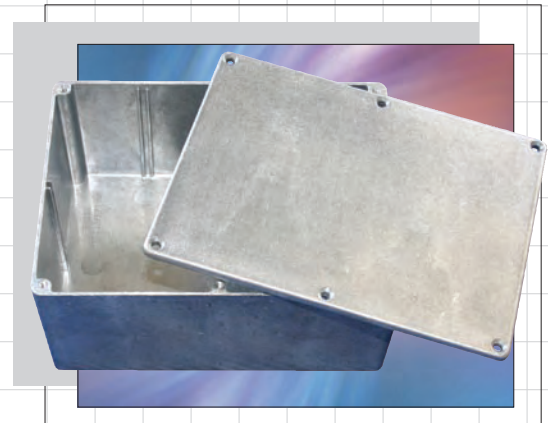
- ◆ Tested and listed to UL-508 Type 4X requirements (UL File #E194432)
- ◆ ADC-12 aluminum alloy
- ◆ Excellent screening properties
- ◆ Gasketed covers attach with M4 stainless steel screws
- ◆ Internal bosses for mounting PCBs horizontally or for connecting terminals, ground, etc. (Requires hardware kit #57-58, ordered separately)
- ◆ Most models also allow for vertical PCB mounting
- ◆ Mounts to wall or panel with #10 size screws (not furnished)
- ◆ Heavy duty .09" thick external wall mounting bracket
- ◆ Silicone gaskets (installed in natural finish boxes; included but not installed in black finish boxes)

DIE-CAST ALUMINUM BOXES

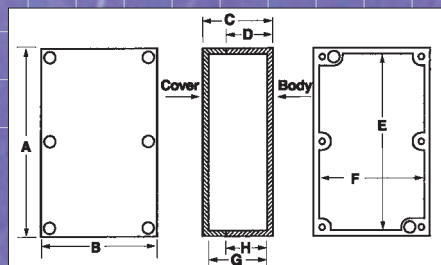
CN-SERIES

NEMA DIE-CAST BOXES

Die-cast aluminum NEMA boxes meet NEMA 1, 2, 4, 4X, 12, 13 and IP65 ratings. Many sizes have internal card guides for PC board mounting or partitioning.



Catalog Numbers	External Dimensions				Internal Dimensions				Wall	Wgt.	Molded-in Card Guides
	A	B	C	D	E	F	G	H	Thickness	Oz.	
CN-5700	2.36	2.16	1.22	1.02	2.25	2.05	1.11	0.97	0.06	2.5	Yes
CN-5701	3.15	2.16	1.00	0.80	3.03	2.04	0.88	0.74	0.06	2.9	Yes
CN-5702	3.52	1.38	1.22	1.02	3.40	1.26	1.10	0.96	0.06	2.5	No
CN-5703	4.51	2.50	1.22	1.02	4.39	2.38	1.10	0.96	0.06	4.3	No
CN-5704	4.51	2.50	2.22	2.02	4.39	2.38	2.10	1.96	0.06	5.8	No
CN-5705	4.54	3.57	2.22	2.02	4.39	3.41	2.06	1.94	0.08	8.1	No
CN-5706	4.73	3.95	1.44	1.24	4.59	3.79	1.28	1.16	0.08	8.7	Yes
CN-5707	5.47	4.01	3.05	2.85	5.31	3.85	2.89	2.77	0.08	14.0	Yes
CN-5708	6.51	5.01	3.05	2.85	6.35	4.85	2.89	2.77	0.08	18.0	Yes
CN-5709	6.78	4.77	2.22	2.02	6.62	4.61	2.06	1.94	0.08	15.3	No
CN-5710	6.78	4.77	4.21	4.01	6.62	4.61	4.05	3.93	0.08	22.2	No
CN-5711	8.75	5.74	2.25	2.05	8.59	5.58	2.09	1.97	0.08	22.2	No
CN-5712	8.75	5.74	4.22	4.02	8.59	5.58	4.06	3.94	0.08	30.3	No
CN-5713	9.85	9.85	4.01	3.81	9.65	9.65	3.81	3.71	0.10	56.2	Yes
CN-5714	10.81	6.89	2.64	2.44	10.79	6.87	2.62	2.43	0.01	33.7	Yes



Design Features

- ◆ ADC-12 aluminum alloy
- ◆ Self-adhesive gasket easily attaches to cover
- ◆ Cover attaches with 4 or 6 screws for a secure and tight seal
- ◆ Internal card guides for PC Board mounting or partitioning (see table)
- ◆ Natural finish (other finishes available upon request)
- ◆ Easily machined and modified to your particular requirements